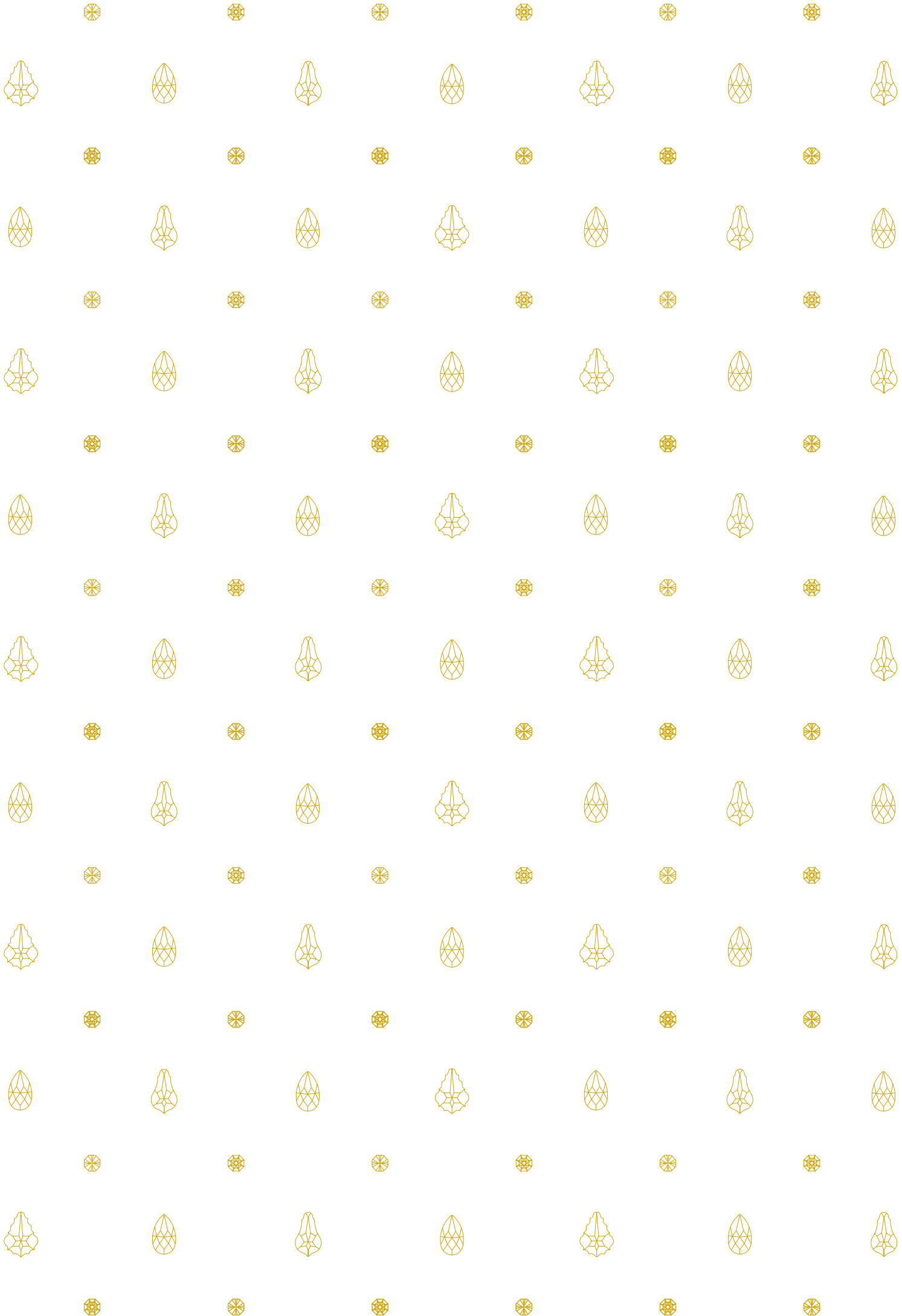




CON
TEMPO
RARY

WWW.FAUSTIG.COM

FAUSTIG¹⁹⁶⁰



4
FAUSTIG

CONTEMPORARY

16
COLLECTION

84
PROJECTS

94
CLASSICS

FAUSTIG CRYSTAL CHANDELIERS

HANDMADE IN ITALY





FIRMENPHILOSOPHIE
BRAND PHILOSOPHY
НАША ФИЛОСОФИЯ

Seit 1960 fertigen wir als Familienunternehmen einzigartige Kristall-Leuchten und handwerkliche Meisterstücke in unserer Manufaktur in Südtirol. Bei uns entstehen in limitierten Stückzahlen Leuchten für Genießer des Außergewöhnlichen. **Tradition und Perfektionismus bilden das Fundament unserer Marke.**

Since 1960 we have been producing unique crystal chandeliers and handcrafted masterpieces in our manufacture in South Tyrol as a family business. We create exclusive chandeliers for connoisseurs of the extraordinary in limited quantities. **Tradition and perfectionism form the foundation of our brand.**

Начиная с 1960 года, мы производим на нашем семейном предприятии в Южном Тироле настоящие шедевры - самые лучшие в мире хрустальные люстры. Созданные вручную, часто в единственном экземпляре, эти уникальные люстры предназначены для ценителей прекрасного. **Фундаментом нашего Дома служат традиции и перфекционизм.**

Faustig Headquarter
Brixen, South Tyrol (IT)





FAUSTIG CRYSTAL CHANDELIERS

SUPERLATIVE MANUFACTURING



LABORATORY FAUSTIG

11



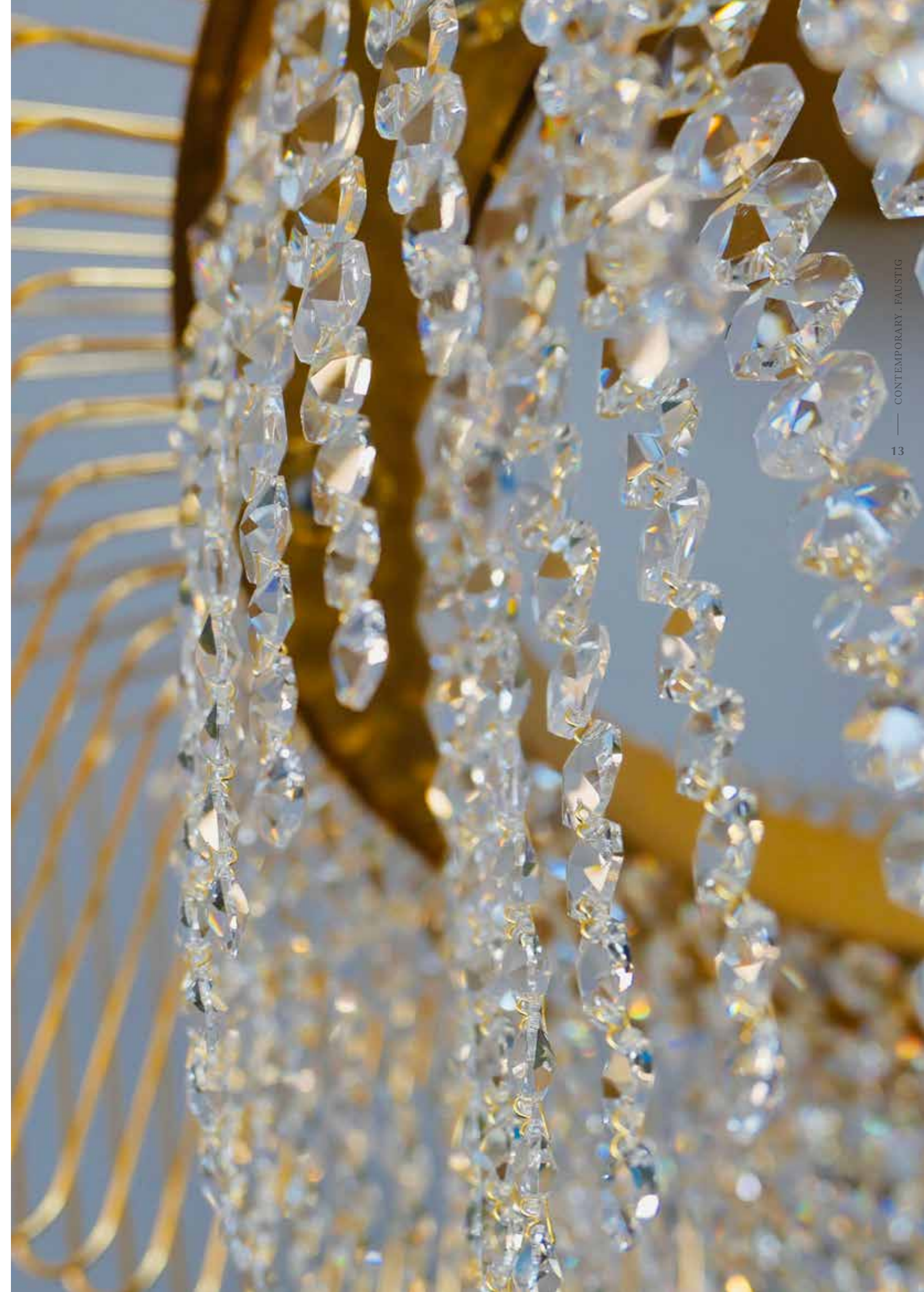
10

MANUFAKTUR
MANUFACTURE
ФАБРИКА

Unsere Firmenphilosophie spiegelt sich auch in der Einzigartigkeit unserer Manufaktur wieder. Wir glauben, dass etwas Herausragendes nur in einer außergewöhnlichen Atmosphäre entstehen kann. Sämtliche Produktionsschritte finden in unserem Unternehmen und der integrierten Oberflächenveredelung statt. Sonderanfertigungen und die Erfüllung besonderer Kundenwünsche sind unsere Kernkompetenz. Die Symbiose von Know-How und hochqualifizierten Mitarbeitern machten vier Weltrekorde für die jeweils größte und schönste Leuchte der Welt möglich. Mit unserer Contemporary Kollektion präsentieren wir die aktuellen Kreationen unseres Hauses.

Our brand philosophy is also reflected in the uniqueness of our manufacture. We believe that something outstanding can only be created in an extraordinary atmosphere. All production steps take place in our company and its integrated surface finishing plant. Bespoke designs and the fulfillment of special customer wishes are our core competence. The combination of know-how and our highly qualified staff made four world records for the largest and most beautiful chandeliers in the world possible. With our Contemporary Collection we present you the latest creations of our company.

Философия нашей фирмы отражена в уникальности нашей фабрики. Мы верим в то, что действительно выдающиеся произведения искусства можно создать только в особой атмосфере. На нашей фабрике находятся абсолютно все этапы производства и отделки. Нашей главной компетенцией является блестящее выполнение специальных проектов и особых пожеланий клиентов. Работа сотрудников высочайшей квалификации в сочетании с профессиональными секретами производства, позволили нам создать четыре Мировых Рекорда и произвести не только самые большие, но и красивейшие люстры в мире. Коллекция нашей современной линии отображает актуальное творчество нашего Дома.



CONTEMPORARY COLLECTION



17022-80

18



29023-140

28



29070-100

42



48750-80

52



55155-120

62



65115-60

80



17026-135

22



29000-110

30



29042-90

38



29102.7-120

44



49122-100

54



55155-180

64



17022-32

24



29000-60

31



29045.7-100

40



29101.7-60

46



49120-60

57



55263-100

66



55294-110

70



65120-120

82



29025-80

26



55073-150

32



46420-115

48



49120.5-4

59



79130.7-20

68



55294-60

74



55292-70

76



29050-110

36



74120-75

50



55090-60

60



79130.7-80

68



55292.5-3
55292.6-50

79

CONTEMPORARY PROJECTS



A3940(1).7-520

86



70906-17

96



A3962.7-150

88



73706-30

98



A7908(1)-160

90



46230-12

100



A7954(3).7-160

92



46230.5-3

100

CON
TEMPO
RARY

COLLECTION



17022-80
24K Gold Organic Waved

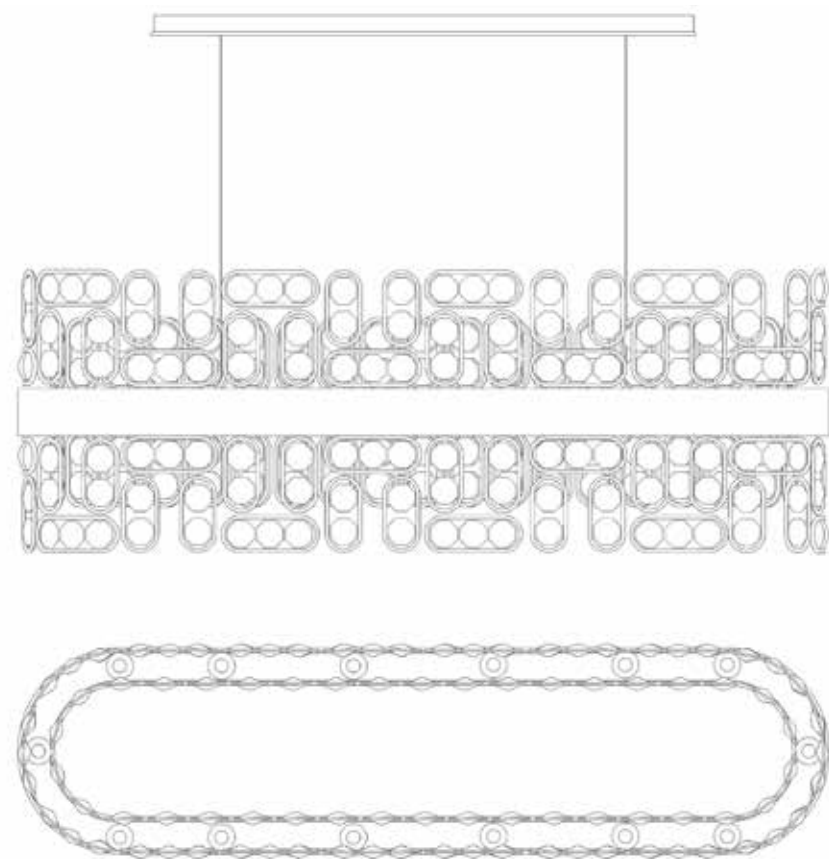


17022-80
24K Gold Organic Waved



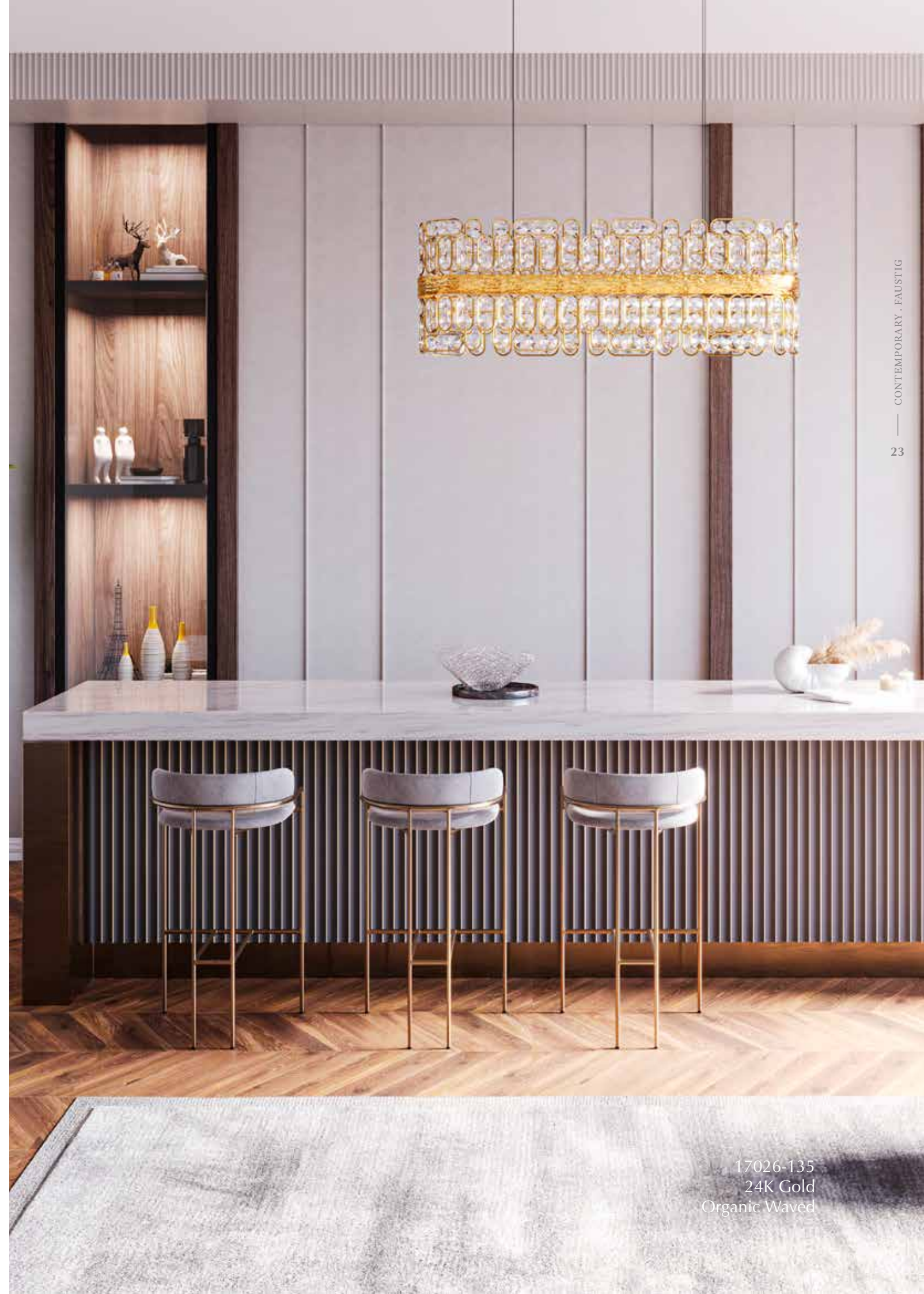
17022-80
24K Gold Organic Waved

17022-60	Ø 60	↕ 40	↓ 55	10 GU10
17022-80	Ø 80	↕ 40	↓ 65	12 GU10
17022-100	Ø 100	↕ 40	↓ 75	16 GU10



17026-135

17026-105	↗ 105	↔ 30	↕ 40	20 GU10
17026-135	↗ 135	↔ 30	↕ 40	24 GU10



17026-135
24K Gold
Organic Waved



17022-32
Copper Organic Waved



17022-32
Copper Organic Waved
Ø 32 ↓ 40 6 GU10



29025-80
24K Gold Organic Waved

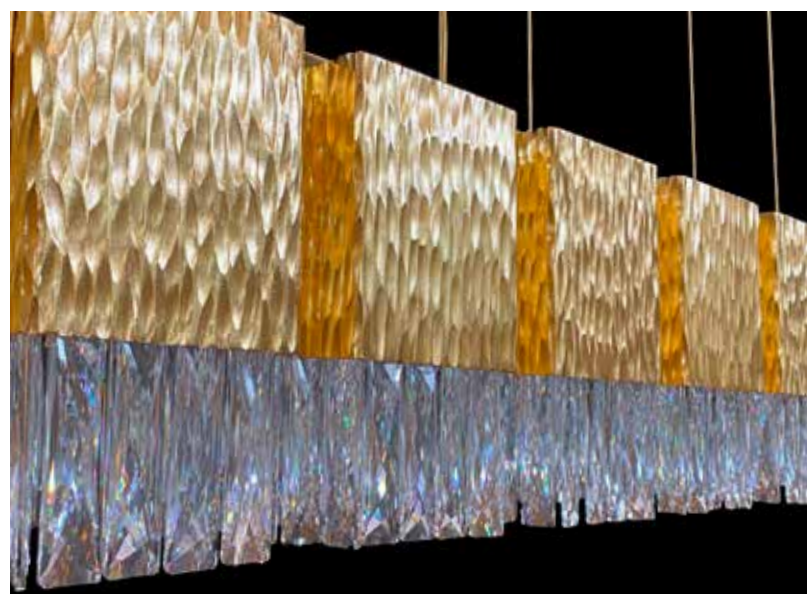
29025-60	Ø 60	↓ 24	↓ 35	6 GU10
29025-80	Ø 80	↓ 24	↓ 45	9 GU10
29025-100	Ø 100	↓ 24	↓ 55	12 GU10

29023-140

29023-84	↗ 84	↔ 24	↕ 25	7 GU10
29023-104	↗ 104	↔ 24	↕ 25	9 GU10
29023-124	↗ 124	↔ 24	↕ 25	11 GU10
29023-144	↗ 144	↔ 24	↕ 25	13 GU10



24K Gold Organic Rocked



24K Gold Organic Waved



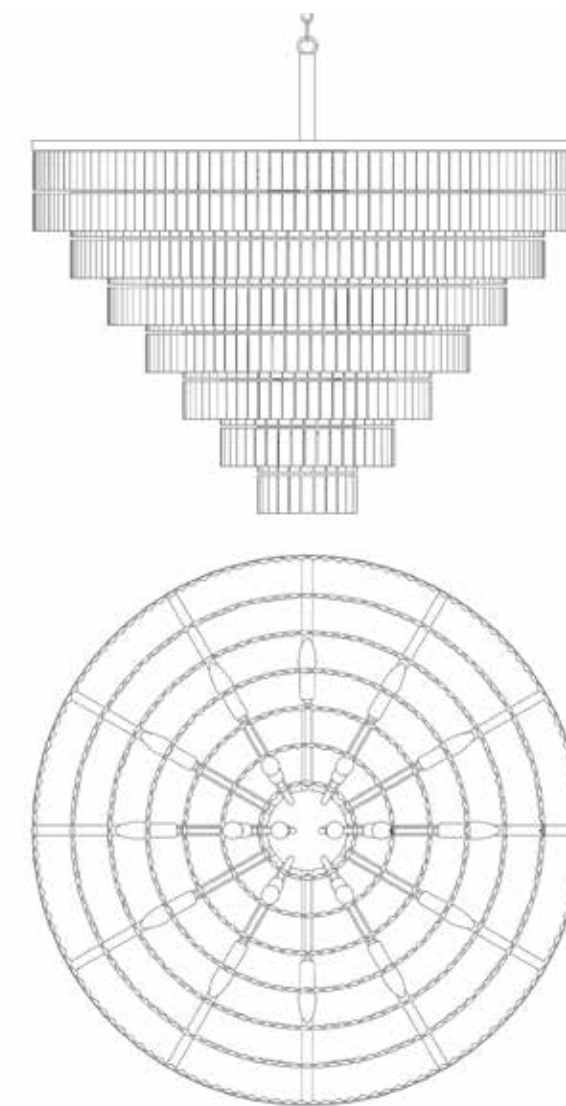
29023-140
24K Gold
Organic Rocked



29000-110

Copper

Ø 110 ↓ 75 20 E14



29000-110

29000-45	Ø 45	↓ 35	8 E14
29000-60	Ø 60	↓ 43	10 E14
29000-75	Ø 75	↓ 51	16 E14



55073-150
Matte black

Picture shows bespoke suspension



55073-150
Matte black

Picture shows bespoke suspension

55073-150

↗ 150 ↔ 20 ↕ 24 15 GU10

Other sizes on request



55073-150
Copper

29050-110
Copper

29050-90	↗ 90	↔ 14	↕ 18	4 E14 2 GU10
29050-110	↗ 110	↔ 14	↕ 18	5 E14 2 GU10
29050-130	↗ 130	↔ 14	↕ 18	6 E14 3 GU10





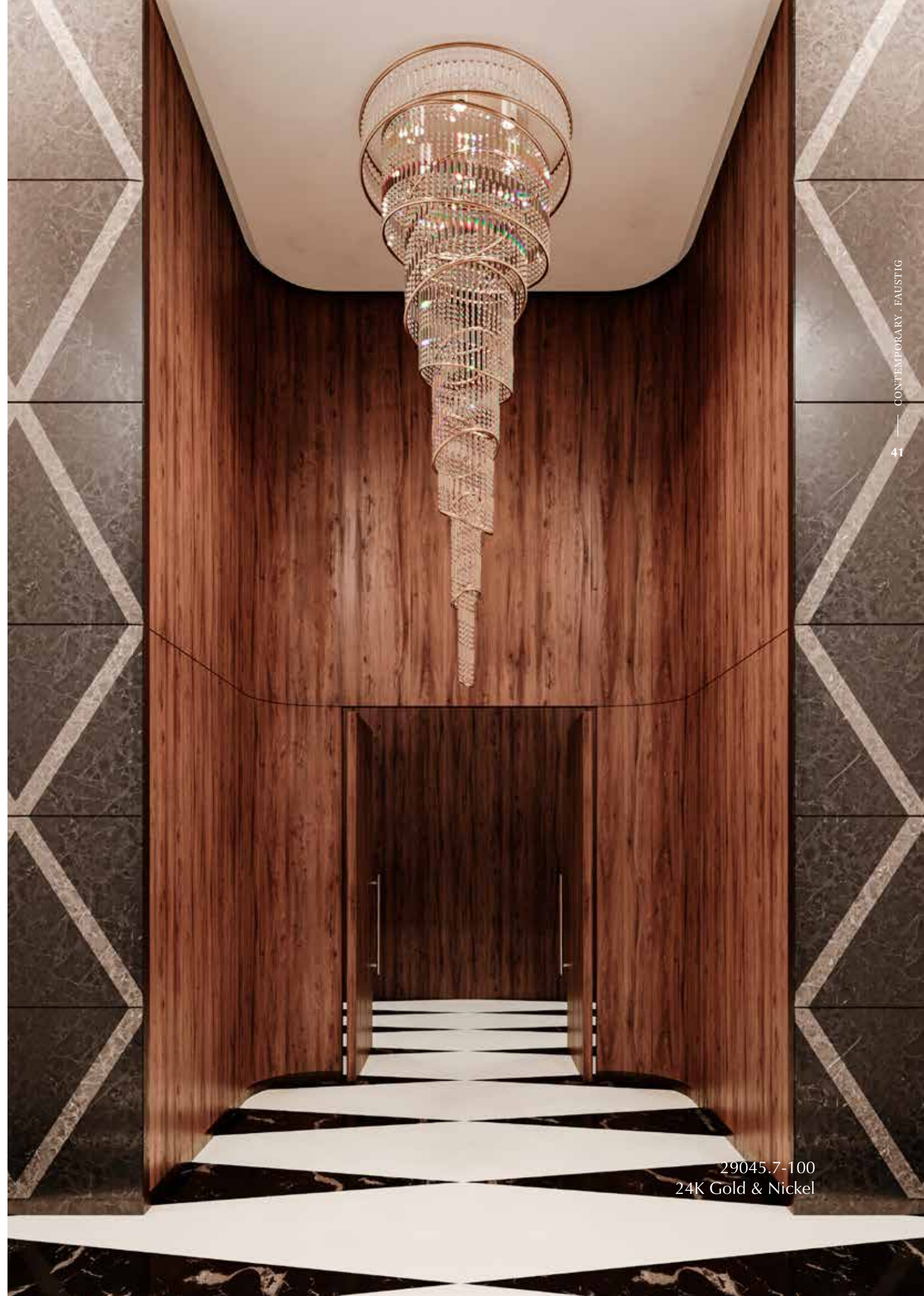
29042-90
24K Gold



29042-90
24K Gold
Ø 90 ↕ 57 ↓ 70 LED Strips
Other sizes on request



29045.7-100
24K Gold & Nickel
Ø 100 ↓ 280 12 GU10
Other sizes on request



29045.7-100
24K Gold & Nickel



29070-100
24K Gold



29070-100
24K Gold
Detail picture shows 24K Gold matte lacquer
Ø 100 ↓ 62 27 E14
Other sizes on request



29102.7-120
24K Gold

CONTEMPORARY JUSTIG

44

45



CHANEL
PARIS

CHANEL



46

29101.7-120
24K Gold



29101.7-60
24K Gold
Ø 60 ↓ 110 5 GU10



29102.7-120
24K Gold
29102.7-50 ↗ 50 ↔ 15 ↓ 76 2 GU10
29102.7-100 ↗ 100 ↔ 15 ↓ 76 4 GU10
29102.7-120 ↗ 120 ↔ 15 ↓ 76 5 GU10



46420-115

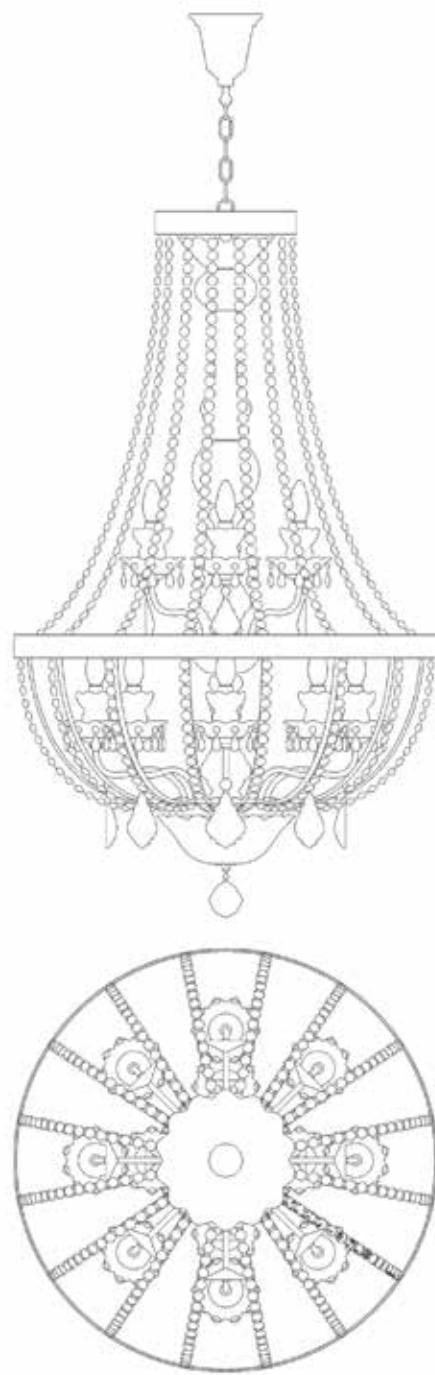
24K Gold

Ø 115 ↓ 55 16 E14

Other sizes on request



46420-115
24K Gold



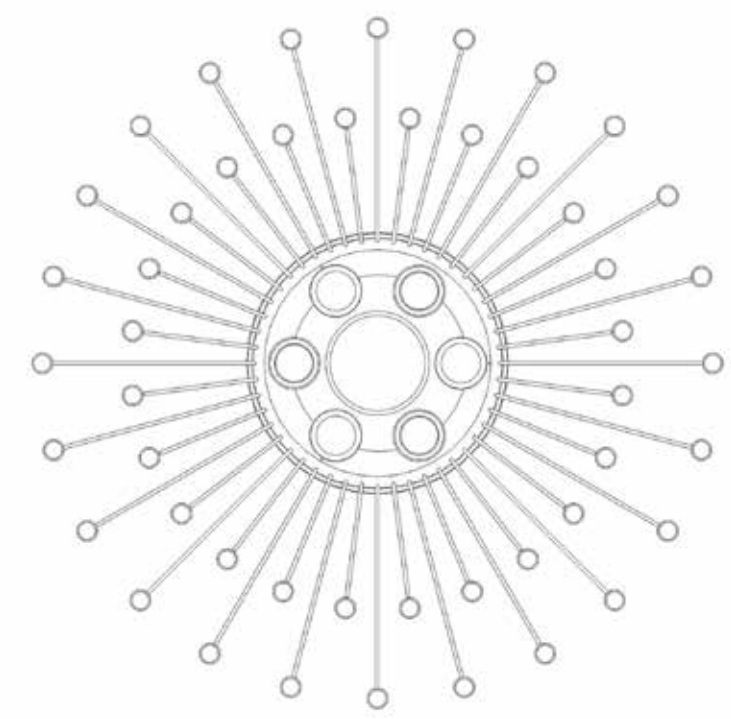
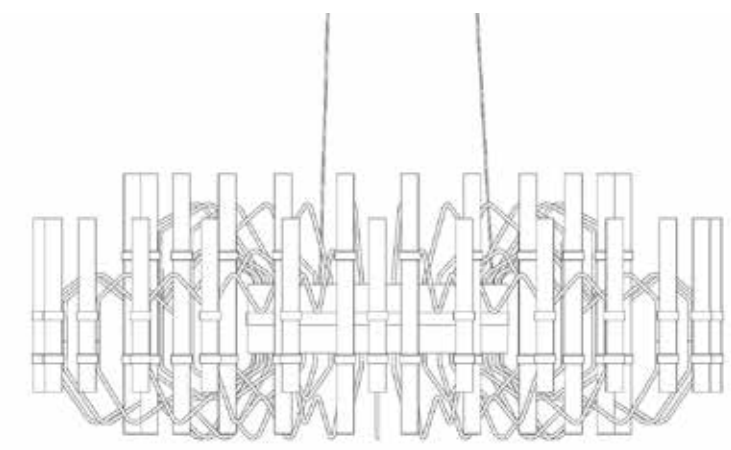
74120-75
 Ø 75 ↕ 124 12 E14
 Other sizes on request



74120-75
 24K Gold



48750-80
Copper

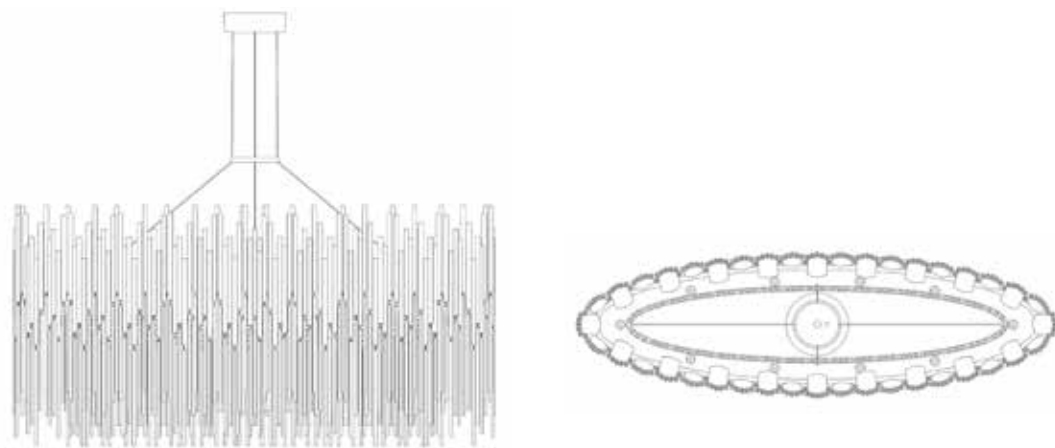


48750-80
Ø 80 ↕ 30 ↓ 45 6 GU10 + LED Strip
Other sizes on request



49122-100
24K Gold

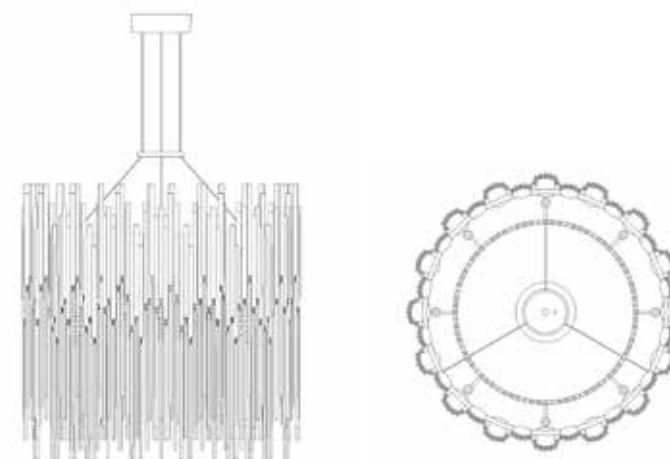




49122-100
24K Gold

↗ 100 ↔ 30 ↕ 60 ↓ 80 10 G9

Other sizes on request



49120-60
24K Gold

49120-25	Ø 25	↕ 60	↓ 70	6 G9
49120-60	Ø 60	↕ 60	↓ 70	8 G9
49120-80	Ø 80	↕ 60	↓ 75	12 G9
49120-100	Ø 100	↕ 60	↓ 80	16 G9

49120-60
24K Gold



49120.5-4
24K Gold

↗ 18 ↕ 58 ↳ 10 4 G9





55090-60
24K Gold & Nickel

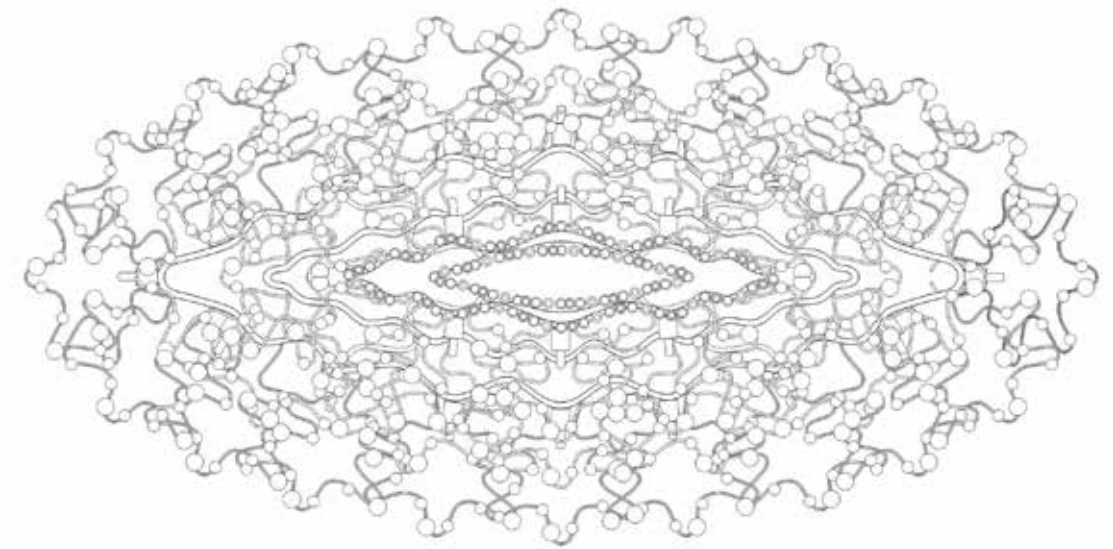
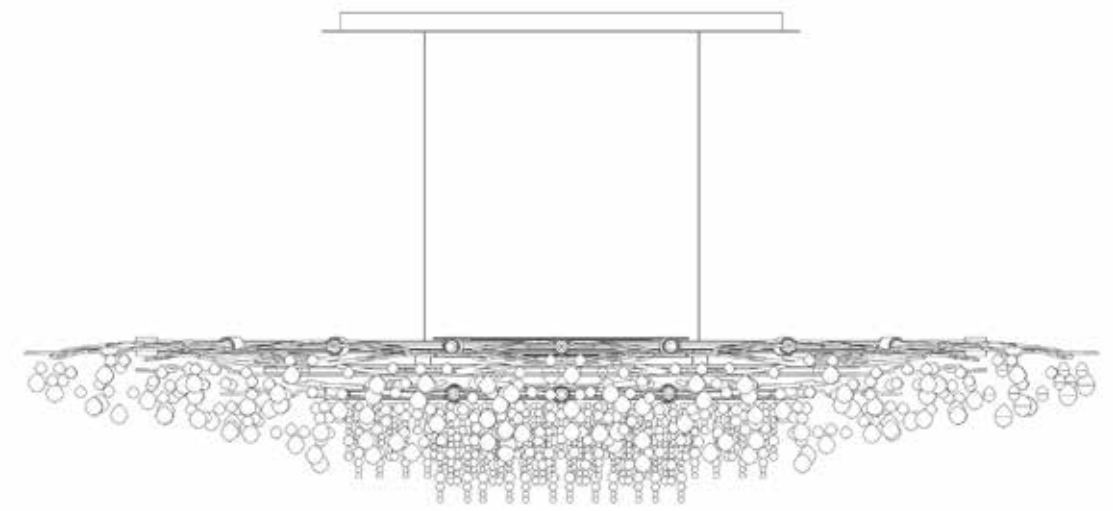


55090-60
24K Gold & Nickel

55090-50	Ø 50	↓ 55	5 G9
55090-60	Ø 60	↓ 65	6 G9
55090-80	Ø 80	↓ 75	8 G9



55155-120
24K Gold & Nickel



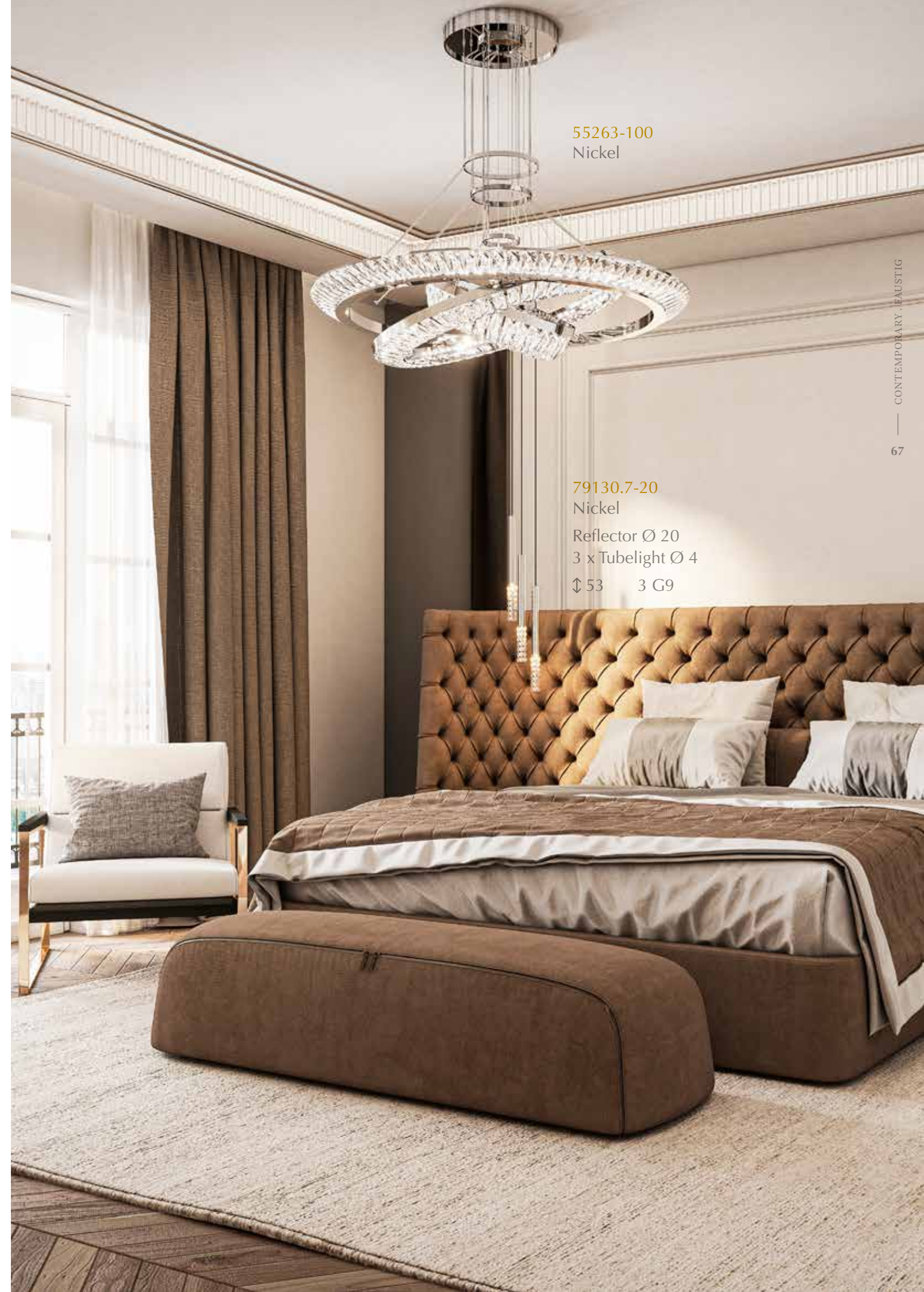
55155-180

55155-100	↗ 100	↔ 46	↕ 15	10 G9
55155-120	↗ 120	↔ 60	↕ 20	12 G9
55155-150	↗ 150	↔ 75	↕ 25	18 G9
55155-180	↗ 180	↔ 90	↕ 30	24 G9

55155-180
24K Gold & Nickel



55263-100
Nickel
Ø 100 ↕ 45 ↓ 55 LED Strips
Other sizes on request



55263-100
Nickel

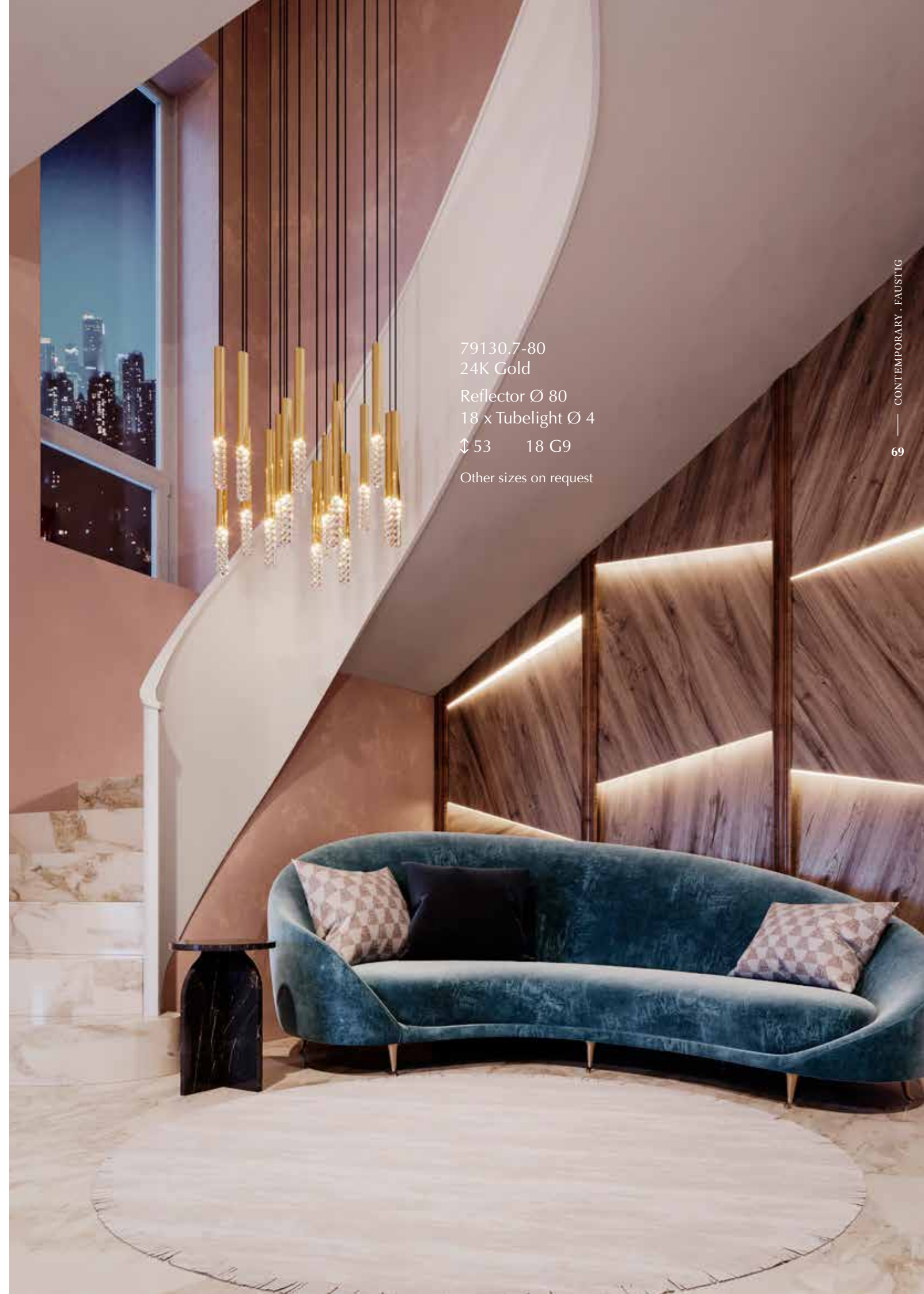
79130.7-20
Nickel
Reflector Ø 20
3 x Tubelight Ø 4
↕ 53 3 G9



79130.7-20
 Nickel
 Reflector Ø 20
 3 x Tubelight Ø 4
 ↓ 53 3 G9
 Other sizes on request



79130.7-20
 24K Gold
 Reflector Ø 20
 3 x Tubelight Ø 4
 ↓ 53 3 G9
 Other sizes on request



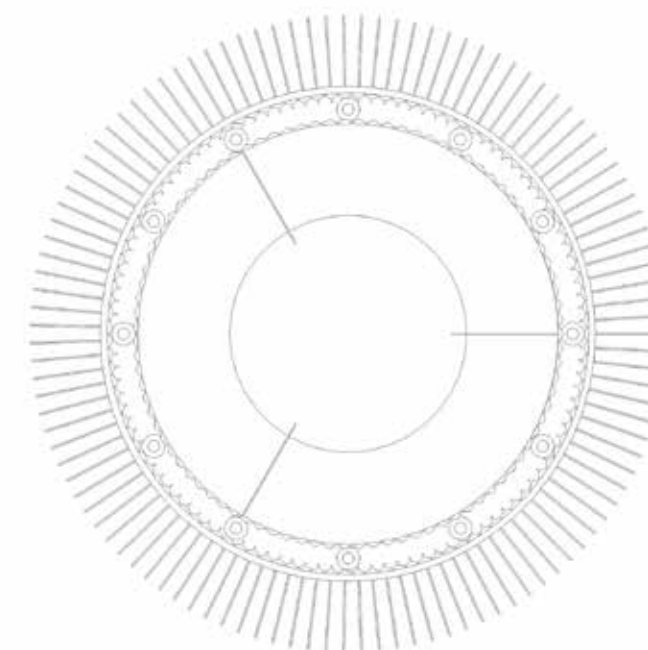
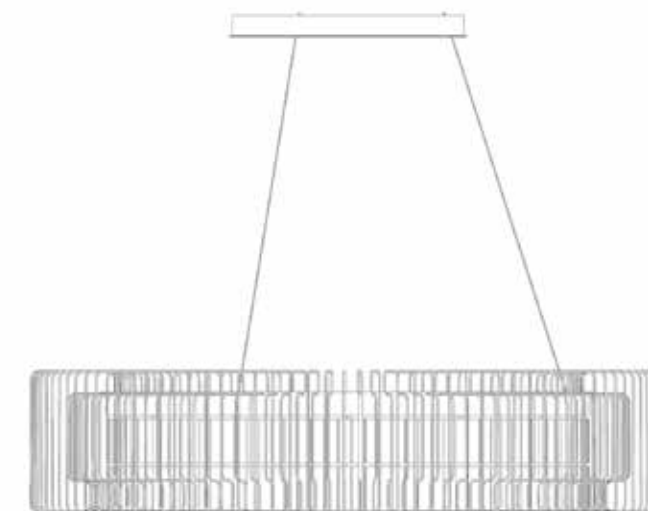
79130.7-80
 24K Gold
 Reflector Ø 80
 18 x Tubelight Ø 4
 ↓ 53 18 G9
 Other sizes on request



55294-110
Nickel



55294-110
Nickel



55294-110

Ø 110 ↕ 25 ↓ 40 12 LED

Other sizes on request



55294-60
24K Gold

Ø 60 ↕ 25 ↓ 30 6 LED



55294-60
24K Gold



55292-70
24K Gold



55292-70
24K Gold

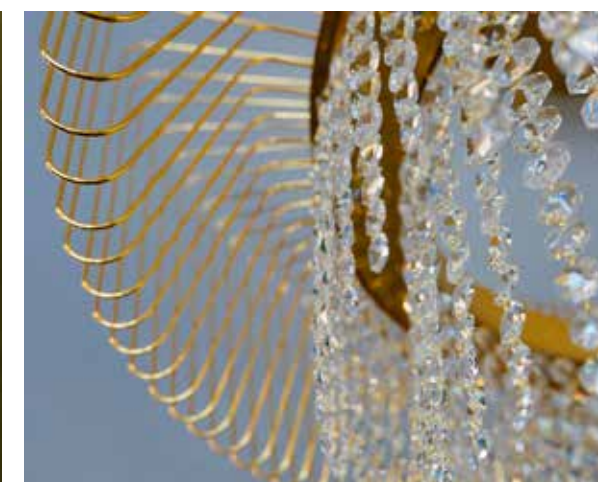
55292-70	Ø 70	↕ 40	↘ 45	6 LED
55292-100	Ø 100	↕ 40	↘ 55	12 LED

Other sizes on request

55292-100
24K Gold brushed



55292.5-3 | wall bracket
24K Gold brushed



55292.5-3 | wall bracket
24K Gold brushed
↔ 32 ↕ 40 ↳ 22 3 LED

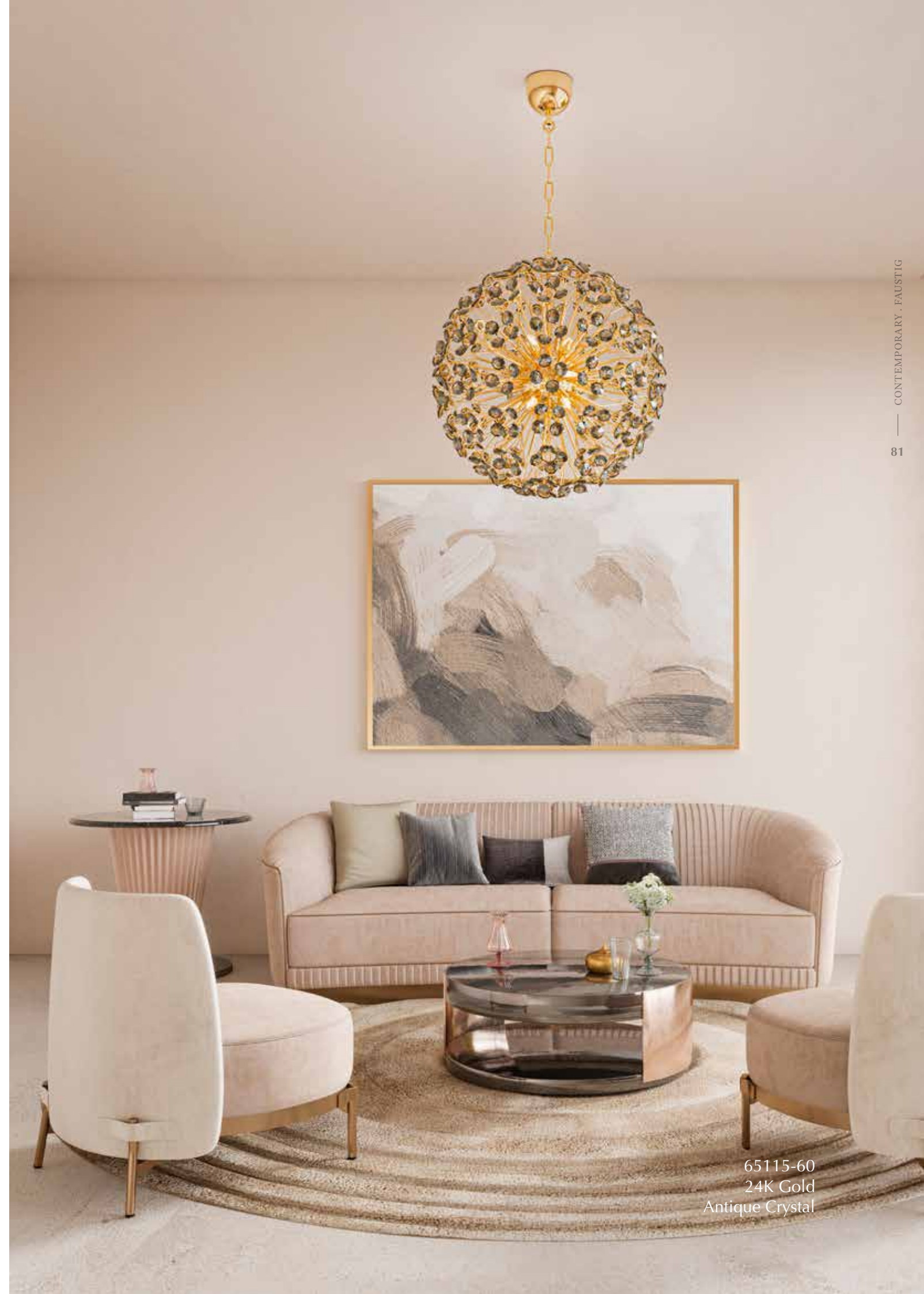
55292.6-50 | floor lamp
24K Gold brushed
Ø 50 ↕ 180 6 LED



65115-60
 24K Gold
 Antique Crystal
 Clear Crystal on request

Ø 60 ↓ 60 12 G9

Other sizes on request



65115-60
 24K Gold
 Antique Crystal



65120-120
24K Gold & Nickel



65120-120
24K Gold & Nickel

Ø 120 ↓ 114 12 GU10

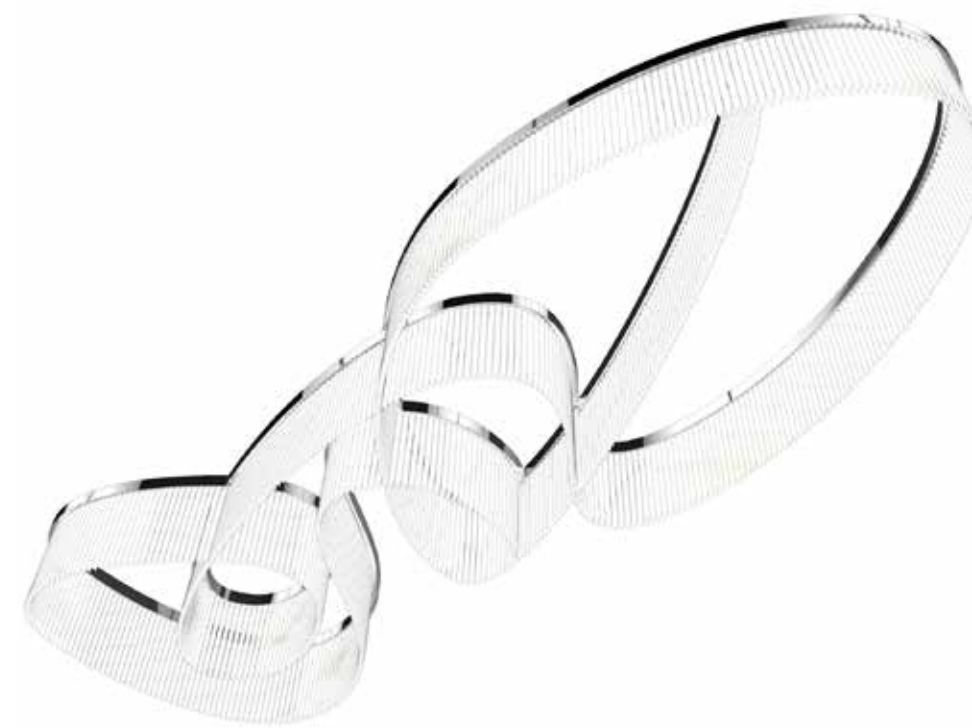
Other sizes on request

CON TEMPO RARY

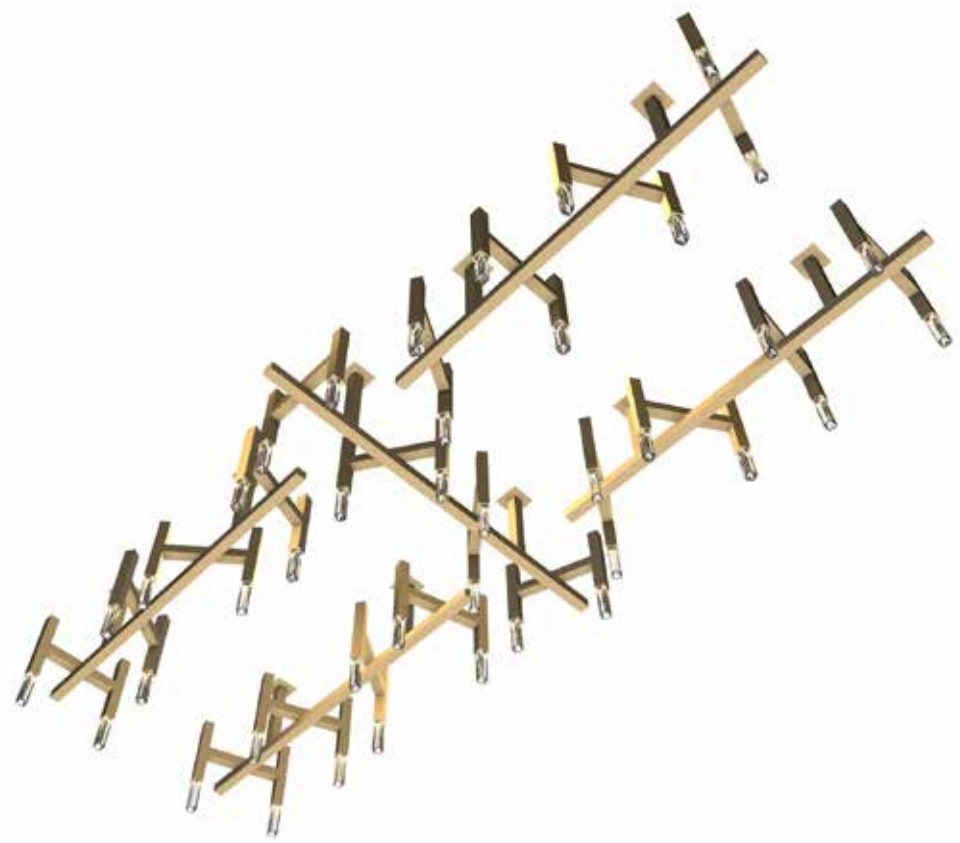
PROJECTS



A3940(1).7-520
Nickel



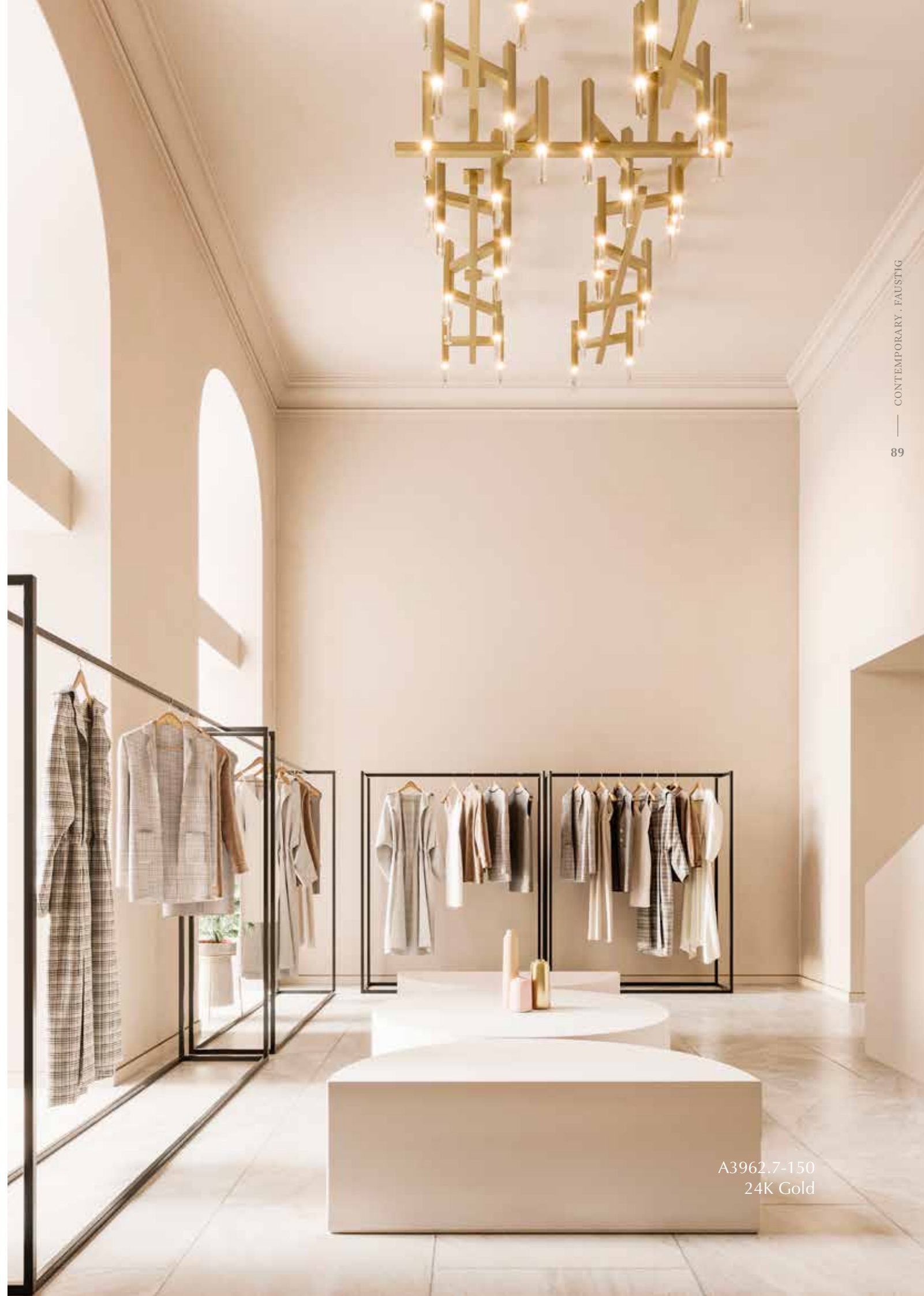
A3940(1).7-520
Nickel
↗ 520 ↔ 160 ↕ 55 LED
Other sizes on request



A3962.7-150
24K Gold

On picture 5 pcs. A3962.7-150
↗ 150 ↔ 38 ↕ 57 8 LED

Other sizes on request

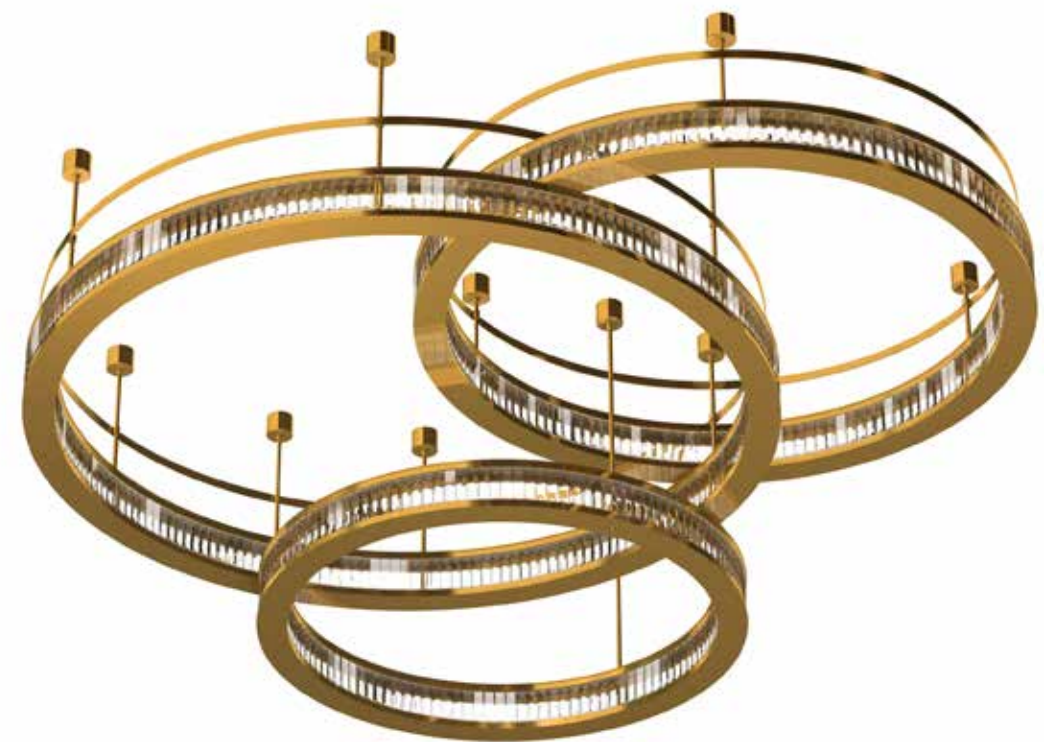


A3962.7-150
24K Gold



79130.7-20
24K Gold
See on page 68

A7908(1)-160
24K Gold



A7908(1)-160
24K Gold

On picture you see:

A7908(1)-110	Ø 110	↓ 27	LED Strips
A7908(1)-130	Ø 130	↓ 27	LED Strips
A7908(1)-160	Ø 160	↓ 27	LED Strips

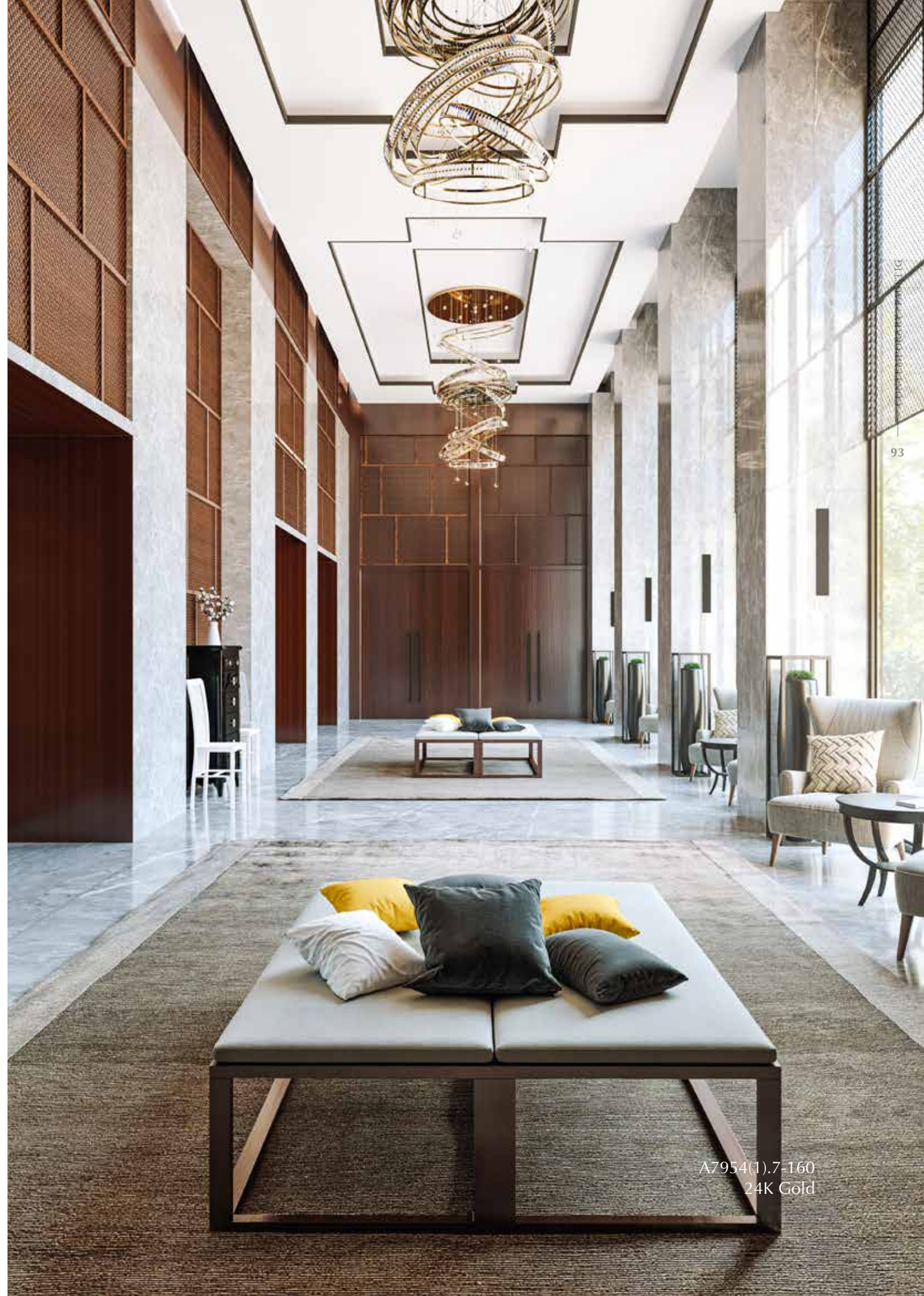
Complete shown on picture:

↗ 200 ↔ 220 ↓ 57 LED Strips, driver extern

Other sizes on request



A7954(3).7-160
24K Gold
Ø 160 ↑ 300 9 GU10
Other sizes on request



A7954(1).7-160
24K Gold

CON TEMPO RARY

CLASSICS



70906-17
24 K Gold



70906-15
Platinum

70906-3	Ø 30	↑ 40	3 E14
70906-5	Ø 40	↑ 55	5 E14
70906-7	Ø 55	↑ 72	7 E14
70906-8	Ø 65	↑ 81	8 E14
70906-9	Ø 77	↑ 98	9 E14
70906-11	Ø 88	↑ 106	11 E14
70906-13	Ø 102	↑ 119	13 E14
70906-15	Ø 120	↑ 140	15 E14
70906-17	Ø 135	↑ 160	17 E14



73706-30
24K Gold

73706-30	Ø 135	↓ 105	30 E14
73706-42	Ø 160	↓ 140	42 E14



73706-30
24K Gold



46230-12
Platinum

46230.5-3
Platinum



46230-12
Platinum

46230-8	Ø 80	↓ 115	8 E14
46230-10	Ø 100	↓ 130	10 E14
46230-12	Ø 100	↓ 130	12 E14

Wall bracket

46230.5-2	↔ 35	↓ 40	↳ 23	2 E14
46230.5-3	↔ 45	↓ 40	↳ 27	3 E14

ABSTRACT

COLLECTION

p		Ø ↗	↔	↕	↓	↳	E14	G9	GU10	LED
21	17022-60	60		40	55				10	
21	17022-80	80		40	65				12	
21	17022-100	100		40	75				16	
22	17026-105	105	30	40					20	
22	17026-135	135	30	40					24	
25	17022-32	32		40					6	
27	29025-60	60	24		35				6	
27	29025-80	80	24		45				9	
27	29025-100	100	24		55				12	
28	29023-88	88	24	25					6	
28	29023-108	108	24	25					10	
28	29023-140	140	24	25					14	
30	29000-110	110		75			20			
31	29000-45	45		35						
31	29000-60	60		43						
31	29000-75	75		51						
34	55073-150	150	20	24					15	
36	29050-90	90	14	18			4		2	
36	29050-110	110	14	18			5		2	
36	29050-130	130	14	18			6		3	
39	29042-90	90		57	70				6	
40	29045.7-100	100		280					12	
43	29070-100	100		62			27			
47	29101.7-60	60		110					5	
47	29102.7-50	50	15	76					2	
47	29102.7-100	100	15	76					4	
47	29102.7-120	120	15	76					5	
48	46420-115	115		55			16			
50	74120-75	75		124			12			
53	48750-80	80		30	45				6	x
56	49122-100	100	30	60	80			10		
57	49120-25	25		60	70			6		
57	49120-60	60		60	70			8		
57	49120-80	80		60	75			12		
57	49120-100	100		60	80			16		
59	49120.5-4	18		58		10		4		
61	55090-50	50		55	70			5		
61	55090-60	60		65	80			6		
61	55090-80	80		75	90			8		
65	55155-100	100	46	15				10		
65	55155-120	120	60	20				12		
65	55155-150	150	75	25				18		
65	55155-180	180	90	30				24		
66	55263-100	100		45	55					x

PROJECTS

p		Ø ↗	↔	↕	↓	↳	E14	G9	GU10	LED
68	79130.7-20	20		53				3		
68	79130.7-80	80		53				18		
73	55294-110	110		25	40					12
74	55294-60	60		25	30					6
77	55292-70	70		40	45					6
77	55292-100	100		40	55					12
79	55292.5-3		32	40		22				3
79	55292.6-50	50		180						12
80	65115-60	60		60				12		
83	65120-120	120		114					12	
87	A3940(1).7-520	520	160	55						x
88	A3962.7-150	150	38	57						8
91	A7908(1)-110	110		27						1
91	A7908(1)-130	130		27						1
91	A7908(1)-160	160		27						1
92	A7954(3).7-160	160		300					9	
97	70906-3	30		40			3			
97	70906-5	40		55			5			
97	70906-7	55		72			7			
97	70906-8	65		81			8			
97	70906-9	77		98			9			
97	70906-11	88		106			11			
97	70906-13	102		119			13			
97	70906-15	120		140			15			
97	70906-17	135		160			17			
98	73706-30	135		105			30			
98	73706-42	160		140			42			
101	46230-8	80		115			8			
101	46230-10	100		130			10			
101	46230-12	100		130			12			
101	46230.5-2		35	40		23	2			
101	46230.5-3		45	40		27	3			

- Ø diameter length
- ↗ length
- ↔ width
- ↕ height
- ↳ depth
- ↓ Minimum suspension height
- ▬ cm

FINISHES & STRUCTURES

FINISHES



24K Gold plated, high gloss



24K Gold plated, matte lacquer



24K Gold plated, satin-brushed



Platinum plated, high gloss



Platinum plated, matte lacquer



Platinum plated, satin-brushed



Copper plated, high gloss



Copper plated, matte lacquer



Copper plated, light browned



Nickel plated, high gloss



Nickel plated, matte lacquer



Nickel plated, satin-brushed

STRUCTURES



Organic Rocked



Organic Waved

INFORMATION

The Numbering System

The five-figure number refers to the model. This is followed after a full stop by the product type (this number is omitted in the case of hanging chandeliers). Then, after a hyphen, either the number of bulbs or the diameter (cm) is indicated.

Example:

40600-8 = chandelier with 8 outer flames
77514-80 = chandelier with 80 cm diameter and inner flames

Possible product types:

- .2 = halogen fitted recess lamp (transformer not included in delivery)
- .4 = end table lamp (from 50 cm height)
- .5 = wall bracket
- .6 = floor lamp
- .7 = flush-to-ceiling lamp with reflector (direct ceiling attachment)
- .8 = table lamp (up to 50 cm height)
- .9 = mirror
- A = A at the beginning of a model number refers to a customised design

Example:

40600.5-2 = wall bracket with 2 flames
28100.7-50 = flush-to-ceiling lamp with reflector

Dimensions

∅ diameter

↗ length

↔ width

↕ height

The height refers to the height without canopy and chain. It is followed in brackets () by the minimum suspension height of a chandelier.

↳ depth

↓ Minimum suspension height

⏟ All dimensions are indicated in cm

Electrical installation

Our chandeliers conform to the international norms. The cabling is suitable for 110 - 240 V. Each chandelier is tested with 5000 V. Depending on the product type, the following sockets are integrated:

B15	Export	UK	E26	Export	US, JAP
B22	Export	UK	E27	Standard	
E12	Export	US	G4	Standard	
E14	Standard		G9	Standard	
E17	Export	JAP	GU10	Standard	

Dimmers

We recommend the use of large-scale dimmers, with electronics that should be built into a switchboard panel if possible. This enables bulbs of higher wattage to be used – they may be adjusted to suit your requirements, and the lower load also means that they last a lot longer. When using LEDs, the dimmability must be checked. Dimmers should be subjected to a load of no more than 80 %.

Recommended bulbs

Lamps are not included in the price of the chandelier, but may certainly be included in the order. Depending on the model, we recommend the following lamp types:

LED lamps

We offer LED variants for the above-mentioned sockets (LED lamps have improved light efficiency, lower power consumption, less heat development and longer service life).

You can fit any FAUSTIG CRYSTAL CHANDELIER with suitable LED lamps.

In this regard, the following should be considered:

- the dimmability
- a pleasant colour temperature of approximately 2800 K (warm white)
- adequate light efficiency of at least 220 lm.

For comparison:

220 - 250 lm = conventional 25-watt bulb
410 - 470 lm = 40-watt bulb
700 - 810 lm = 60-watt bulb

High-voltage halogen lamps:

E14 and E27 are also available as high-voltage halogen lamps (improved light efficiency, lower power consumption, less heat development, longer service life).
G9 with plug-in base
GU10 spot with bayonet mount

Low-voltage halogen lamps:

Low-voltage sockets need to be fitted with 12 V - 5-20 W G4 lamps.

Lamp installation

The normal chain or cable length including canopy is about 80 cm. Should you require a different length when placing your order, no additional charge will be made. Heavy fittings are also equipped with an extra stainless steel safety cable.

Spare parts

Essential spare parts are delivered free of charge with each fitting. Any additional spare parts required are normally sent the same day. Do please send a sample, though, even if it is in fragments.

Care and maintenance

Before cleaning, switch off the fuse! A CRYSTAL CHANDELIER can be quickly dusted down using a soft brush or a feather duster. From time to time, however, to preserve its brilliance and beauty, the crystal should be cleaned with water, a brush, soft cloths and mild detergent. This will ensure that your FAUSTIG CRYSTAL CHANDELIER brings you many years of enjoyment.

Faustig Premium Crystal

Faustig Premium Crystal is the benchmark for the finest cut and best brilliance. Highest production standards in Europe without the obsolete addition of lead also ensure short delivery routes and environmentally friendly production.



FAUSTIG SRL & C. SAS

Zona Artigianale, 6
I-39040 Varna-Bressanone/Brixen (BZ)
Tel. +39 0472 27 26 01
Fax +39 0472 27 26 91
email@faustig.it



WWW.FAUSTIG.COM

Foto: Faustig, unplash E. Crossgastiger dialog.bz

