

collezione  
**VINTAGE**



**MAR**  
ILLUMINAZIONE





# INDICE INDEX

DUBAI	04/05
GLASGOW	06/07
MADRID	08
IBIZA	09
LOS ANGELES	10
NEW YORK	11
LIMA	12/13
AMALFI	14
ISCHIA	15
EDIMBURGO	16
MILANO	17
COLORS	18/19
TECHNICAL DETAILS	20/21/22

DUBAI









MADRID







LOS ANGELES









AMALFI





EDIMBURGO







# COLORI PARALUMI

## COLOURS LAMPSHADES



**Cod. 86**  
Bianco  
White



**Cod. 60**  
Aorio  
Ivory



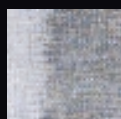
**Cod. 72**  
Grigio  
Grey



**Cod. 000**  
Nero  
Black



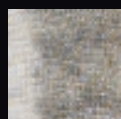
OR 24



OR 86



OR 41



OR 60



OR 92



OR 50



OR 91



OR 8



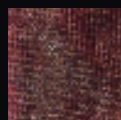
OR 6



OR 64



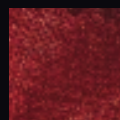
OR 40



OR 67



OR 121



OR 47



OR 31



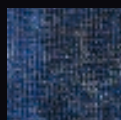
OR 70



OR 78



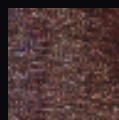
OR 12



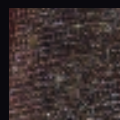
OR 25



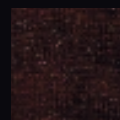
OR 85



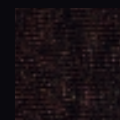
OR 10



OR 84



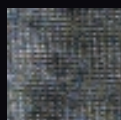
OR 123



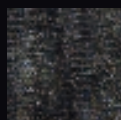
OR 148



OR 15



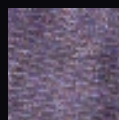
OR 72



OR 74



OR 000



OR 38

# COLORI FINITURE

## COLOURS FINISHES



**Art. 01**  
Cromo  
Chrome



**Art.02**  
Oro galvanico  
Galvanic gold



**Art. 03**  
Porporina oro  
Purpurine gold



**Art. 04**  
Aorio / oro  
Ivory / gold



**Art. 05**  
Bianco / oro  
White / gold



**Art. 06**  
Bianco lucido  
White gloss



**Art. 07**  
Bianco / argento  
White / silver



**Art. 08**  
Bianco opaco  
White matt



**Art. 09**  
Nero opaco  
Black matt



**Art. 10**  
Nero / argento  
Black / silver



**Art. 11**  
Nero lucido  
Black gloss



**Art. 12**  
Nero / oro  
Black / gold



**Art. 13**  
Marrone / oro  
Brown / gold

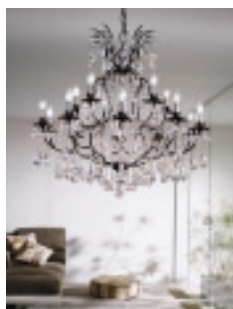


**Art. 14**  
Porporina argento  
Purpurine silver

# INFORMAZIONI TECNICHE

## TECHNICAL DETAILS

---



## DUBAI

### Lampadario DUBAI/10+5+1 luci

Struttura verniciata nero lucido con particolari cromo.

### Chandelier DUBAI/10+5+1 lights

Bright Black painted frame with chrome-plated details.

Foto a pagina / Photo on page: 04

### Dimensioni / Dimensions:

H 95 cm  
Ø 100 cm  
16 E14 x 40W MAX

Peso / Weight: Kg. 19,00

---



## DUBAI

### Applique DUBAI/2 luci

Struttura verniciata nero lucido con particolari cromo.

### Wall lamp DUBAI/2 lights

Bright Black painted frame with chrome-plated details.

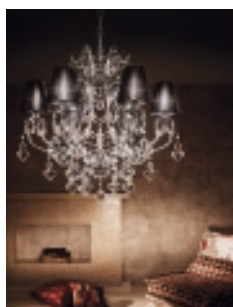
Foto a pagina / Photo on page: 05

### Dimensioni / Dimensions:

H 54 cm  
Ø 36 cm  
P 22 cm  
2 E14 x 40W MAX

Peso / Weight: Kg. 2,00

---



## GLASGOW

### Lampadario GLASGOW/6 luci

Struttura cromo e completo di paralumi in organza di colore nero.

### Chandelier GLASGOW/6 lights

Chrome-plated frame and with black organza lampshades.

Foto a pagina / Photo on page: 07

### Dimensioni / Dimensions:

H 70 cm  
Ø 75 cm  
6 E14 x 40W MAX

Peso / Weight: Kg. 9,00

---



## MADRID

### Lampadario MADRID/12 luci

Struttura verniciata avorio/oro con particolari in oro 24 carati, completo di paralumi in organza di colore avorio.

### Chandelier MADRID/12 lights

Ivory/gold painted frame with 24 carat gold-plated details and with ivory organza lampshades.

Foto a pagina / Photo on page: 08

### Dimensioni / Dimensions:

H 55 cm  
Ø 94 cm  
12 E14 x 40W MAX

Peso / Weight: Kg. 12,00

---



## IBIZA

### Lampadario IBIZA/12 luci

Struttura verniciata marrone/oro.

### Chandelier IBIZA/12 lights

Brown/gold painted frame.

Foto a pagina / Photo on page: 09

### Dimensioni / Dimensions:

H 55 cm  
Ø 87 cm  
12 E14 x 40W MAX

Peso / Weight: Kg. 11,00

---



## IBIZA

### Applique IBIZA/2 luci

Struttura verniciata marrone/oro.

### Wall lamp IBIZA/2 lights

Brown/gold painted frame.

Foto a pagina / Photo on page: 09

### Dimensioni / Dimensions:

H 50 cm

Ø 35 cm

P 20 cm

2 E14 x 40W MAX

Peso / Weight: Kg. 2,00



## LOS ANGELES

### Lampadario LOS ANGELES/8+4 luci

Struttura verniciata bianco lucido con particolari oro

24 carati e imperlinatura in cristallo.

### Chandelier LOS ANGELES/8+4 lights

Bright White painted frame with 24 carat gold-plated details and crystal beaded arms.

Foto a pagina / Photo on page: 10

### Dimensioni / Dimensions:

H 70 cm

Ø 90 cm

12 E14 x 40W MAX

Peso / Weight: Kg. 13,00



## NEW YORK

### Lampadario NEW YORK/6 luci

Struttura verniciata nero lucido con particolari cromo, imperlinatura in cristallo e completo di paralumi in organza di colore bianco.

### Chandelier NEW YORK/8+4 lights

Bright Black painted frame with chrome-plated details, crystal beaded arms and with white organza lampshades.

Foto a pagina / Photo on page: 11

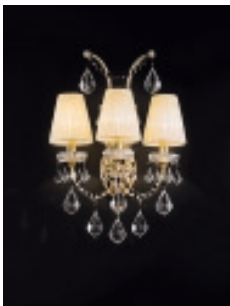
### Dimensioni / Dimensions:

H 55 cm

Ø 72 cm

6 E14 x 40W MAX

Peso / Weight: Kg. 7,00



## LIMA

### Applique LIMA/3 luci

Struttura oro 24 carati, imperlinatura in cristallo e completa di paralumi in organza di colore avorio.

### Wall lamp LIMA/3 lights

24 carat gold-plated frame, crystal beaded arms and with ivory organza lampshades.

Foto a pagina / Photo on page: 12

### Dimensioni / Dimensions:

H 54 cm

Ø 44 cm

P 31 cm

3 E14 x 40W MAX

Peso / Weight: Kg. 3,00



## LIMA

### Lampadario LIMA/10+5 luci

Struttura oro 24 carati, imperlinatura in cristallo e completo di paralumi in organza di colore nero.

### Chandelier LIMA/10+5 lights

24 carat gold-plated frame, crystal beaded arms and with black organza lampshades.

Foto a pagina / Photo on page: 13

### Dimensioni / Dimensions:

H 95 cm

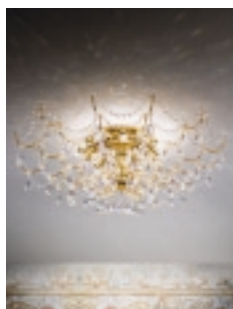
Ø 106 cm

15 E14 x 40W MAX

Peso / Weight: Kg. 20,00

# INFORMAZIONI TECNICHE TECHNICAL DETAILS

---



## AMALFI

**Plafoniera AMALFI/12 luci**  
Struttura oro 24 carati.  
**Ceiling lamp AMALFI/12 lights**  
24 carat gold-plated frame.

Foto a pagina / Photo on page: 14

**Dimensioni / Dimensions:**

H 30 cm  
Ø 90 cm  
12 E14 x 40W MAX

Peso / Weight: Kg. 8,00

---



## ISCHIA

**Lampadario ISCHIA/12 luci**  
Struttura verniciata cromo.  
**Ceiling lamp ISCHIA/12 lights**  
Chrome-plated frame.

Foto a pagina / Photo on page: 15

**Dimensioni / Dimensions:**

H 30 cm  
Ø 90 cm  
12 E14 x 40W MAX

Peso / Weight: Kg. 7,00

---



## EDIMBURGO

**Applique EDIMBURGO/2 luci**  
Struttura verniciata bianco lucido con particolari oro 24 carati.  
**Wall lamp EDIMBURGO/2 lights**  
Bright White painted frame with 24 carat gold-plated details.

Foto a pagina / Photo on page: 16

**Dimensioni / Dimensions:**

H 50 cm  
Ø 29 cm  
P 20 cm  
2 E14 x 40W MAX

Peso / Weight: Kg. 3,00

---



## EDIMBURGO

**Lampadario EDIMBURGO/8 luci**  
Struttura verniciata bianco lucido con particolari oro 24 carati.  
**Chandelier EDIMBURGO/8 lights**  
Bright White painted frame with 24 carat gold-plated details.

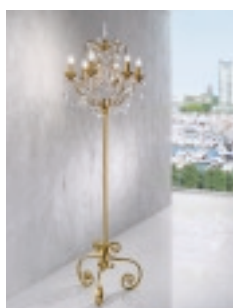
Foto a pagina / Photo on page: 16

**Dimensioni / Dimensions:**

H 70 cm  
Ø 72 cm  
8 E14 x 40W MAX

Peso / Weight: Kg. 12,00

---



## MILANO

**Piantana MILANO/6 luci**  
Struttura verniciata porporina oro.  
**Floor lamp MILANO/6 lights**  
Gold colour painted frame.

Foto a pagina / Photo on page: 17

**Dimensioni / Dimensions:**

H 190 cm  
Ø 57 cm  
6 E14 x 40W MAX

Peso / Weight: Kg. 11,00

---

Ditregroup  
[www.ditregroup.com](http://www.ditregroup.com)

Photo:  
© **QUASAR**

finished printing:  
October 2012

È VIETATA LA RIPRODUZIONE ANCHE  
PARZIALE DI QUESTO CATALOGO.

IT IS FORBIDDEN TO REPRODUCE  
ANY PART OF THIS CATALOGUE.

L'azienda si riserva di modificare a discrezione le  
caratteristiche del prodotto, i dati tecnici e i codici.  
I colori presentati in questo catalogo possono non  
corrispondere esattamente alla realtà, per le possibili  
differenze attribuibili alla riproduzione tipografica.

The company reserves the right without prior notice  
to modify or alter product features, specifications and  
code numbers. Actual colours may vary slightly to those  
shown due to the limitations of the printing process.



**MAR**  
ILLUMINAZIONE

MAR illuminazione sas  
Viale dell'Artigianato, 37  
37042 Caldiero Verona - Italy  
Tel. e fax +39 045/6149045  
info@marilluminazione.com  
www.marilluminazione.com