

colou(r)evolution.

 SIGMA L2
LIGHTING AND INTERIOR DESIGN



colou(r)evolution.

SPRING - SUMMER - AUTUMN - WINTER 2018-19

Blu

2-37

Amber&Orange

38-81

Neutral

82-103

BLACK

104-113

WHITE

114-157

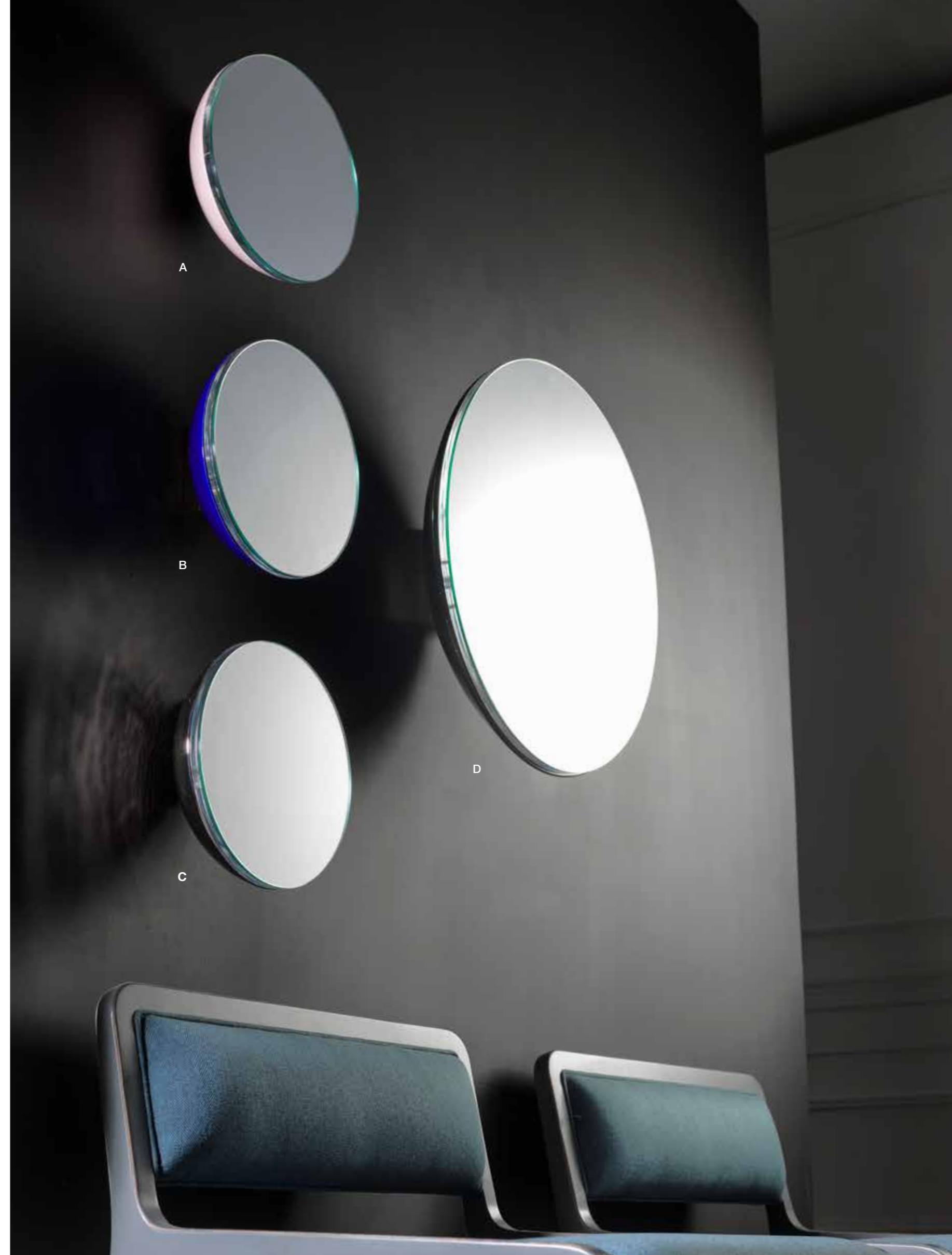
MIX

158-165



- A) SP133**
Smalto rosa. *Pink glaze.*
cm ø28x11h
- B) SP136**
Smalto blue. *Blue glaze.*
cm ø28x11h
- C) SP135**
Placcato platino. *Platinum plated.*
cm ø28x11h
- D) SP138**
Smalto nero. *Black glaze.*
cm ø58x16

Design Simone Granchi 2018
Serie di specchi in maiolica smaltata. Lo specchio viene montato su un piano di plexiglas. Possibile illuminarli con una luce soffusa intorno allo specchio.
Series of mirrors in glazed majolica. The mirror is mounted on a Plexiglas top. Possible to illuminate with a soft light around the mirror





CL2106
Design Granchi Studio 2018
cm 40x85h | 1 E27x 60W

Lampada composta da maiolica smaltata nera e grigio/celeste e particolari in plexiglass e ottone nikelato. Il paralume è in chintz nero interno oro.
Lamp composed by enamel mayolica in black and gray/wlight blue with nickel brass and plexiglass details. Lampshade is in black chintz inside gold.





Z622
Design Simone Granchi 2018
cm 80x30x184h | 1 E27x100W

Lampada da terra tutta in ottone nikel lucido e satinato , il particolare nella base è in celeste metallizzato.
Floor lamp in polished and satin nickel-plated brass, the accent in the base is in light blue metallic glaze.

CL2102
Design Paolo Granchi 1972 | Restyling Granchi Studio 2018
cm 40x32x60h | 1 E27x 60W

Lampada composta da cilindro in refrattario placcato platino, lastre in plexiglass e particolari in ottone nickel.
Paralume in pergamena cristallina.
*Lamp composed with a platinum-plated refractory cylinder, plexiglass slabs and nickel-plated brass details.
Lampshade in crystalline parchment.*





CL2103
Design Paolo Granchi 1972 | Restyling Granchi Studio 2018
cm 29x38x74h | 1 E27x 60W

Lampada composta da maiolica smaltata, particolari in legno laccato nero lucido, ottone nickel e plexiglass.
Paralume in pergamena cristallina.
*Lamp composed with glazed majolica, details in glossy black lacquered wood, nickel brass and plexiglass.
Lampshade in crystalline parchment.*



CL2101
Design Paolo Granchi 1972 | Restyling Granchi Studio 2018
cm 40x32x68h | 1 E27x 60W

Lampada in maiolica in platino invecchiato con particolari in plexiglass e ottone nickel.
Paralume in pergamena cristallina.
*Antique platinum majolica lamp with details in plexiglass and nickel brass.
Lampshade in crystalline parchment.*



Z628
Design Granchi Studio 2018
cm 40x175h | 2 E27x60W

Lampada da terra composta da ottone dorato e nickel con parte centrale in maiolica incisa e placcata platino.
Il paralume è in ottone nickel e in plexiglas mentre il paralume interno in lamè oro.
*Standing lamp in golden and nickel brass with central part in majolica engraved and platinum plated. The nickel
brass lampshade is composed by Plexiglas, the internal lampshade is in gold laminate fabric.*



SP120/1
Design Granchi Studio 2018
cm 82x3x187h

Specchio rivestito in tessuto. Cornici in ottone naturale.
Mirror covered with fabric with natural brass frames.





CL2104
Design Simone Granchi 2018
cm ø48x60h | 2 E27x 60W

Lampada composta da maiolica incisa e placcata platino, particolari in plexiglass e ottone nickel. Il paralume è doppio fuori in tessuto lamé oro, dentro in tessuto lamé argento.
*Lamp composed of engraved majolica and platinum plated, details in nickel and golden brass and plexiglass.
Double lampshade outside in laminated gold fabric, inside in silver laminated fabric.*





CL2108
Design Granchi Studio 2018
cm ø38x87h | 1 E27x 60W

Lampada da tavolo in ottone dorato e nickel, parte centrale in maiolica blue e plexiglas.
Il paralume è in velluto blue.
*Table lamp in gilded and nickel brass, central part in blue glazed majolica and plexiglass.
The lampshade is in blue velvet.*

Z630
Design Simone Granchi 2018
cm 45x178h | 2 E27x60W

Lampada da terra in ottone dorato e nickel, parte centrale in maiolica Blue e plexiglas. Il paralume è in velluto blue.
Floor lamp in gilded and nickel brass, central part in blue glazed majolica and Plexiglas.
The lampshade is in blue velvet.





CL2088
Design Granchi Studio 2018
cm ø35x103h | 1 E27x 60W

Lampada composta da maiolica placcata oro e platino. Particolari in ottone nikel e dorato.
Paralume esterno è in ottone nikel con plexiglass, il paralume interno è in tessuto lamé dorato.
*Lamp composed of gold and platinum plated majolica, with brass / nickel and gold details and plexiglass.
External lampshade is in nickel-plated brass with plexiglass, the inner lampshade is in golden lamé fabric.*



Z629
Design Granchi Studio2018
cm 40x167h | 2 E27x60W

Lampada da terra in ottone nikel con particolari centrali in plexiglas. Il paralume esterno è in ottone nikel con plexiglas, il paralume interno in taffetà bianco.
Standing lamp in golden and nickel-plated brass with Plexiglas details. External shade is in nickel brass and plexiglass, the internal lampshade is in white taffeta.

CL2087
Design Granchi Studio 2018
cm ø35x94h | 1 E27x 60W

Lampada composta da maiolica, ottone/nickel e plexiglass.
Il paralume esterno è in ottone/nickel con rete argentata e il paralume interno in seta nera.
*Lamp composed with majolica, nickel-plated brass and plexiglass.
The lampshade is double; nickel-plated brass with silver net and in black satin.*







Design Francesca Granchi 2018
cm ø29x27h | 1 E27x 60W
Cavo acciaio allungabile
Extendable steel cable cm130

A) 7284/AR/1/S

Pendente, struttura in nikel spazzolato
cristallo liscio.
*Pendant, smooth crystal brushed nickel
structure.*

B) 7284/AR/1

Pendente, struttura in nikel spazzolato
cristallo liscio.
*Pendant, smooth crystal brushed nickel
structure.*

C) 7284/AR

Pendente, struttura in nikel spazzolato
cristallo sfaccettato.
*Pendant, faceted crystal brushed nickel
frame.*

D) 7284/1

Pendente, struttura in ottone naturale
cristallo liscio.
*Pendant, smooth crystal natural brass
structure.*

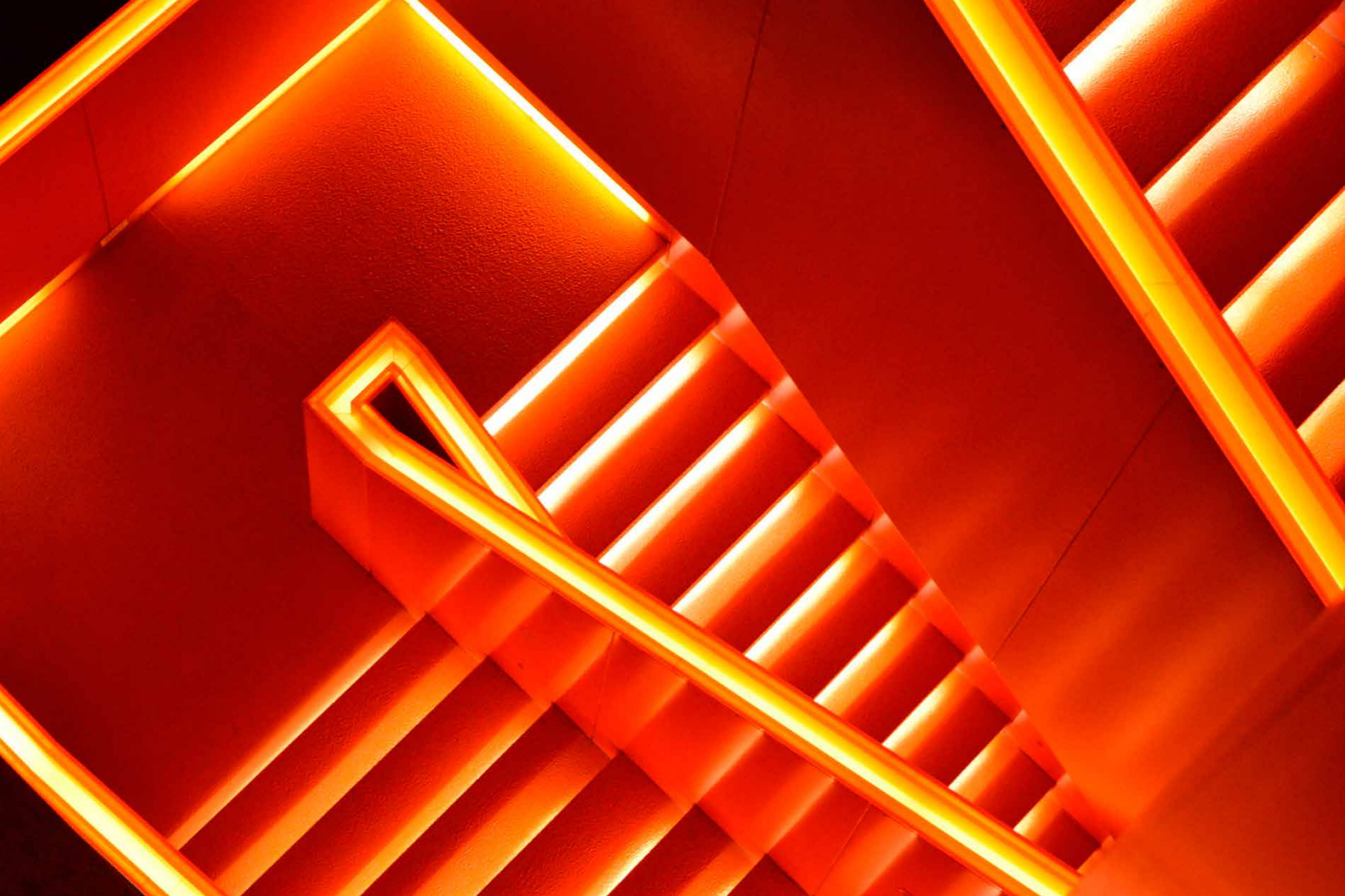
E) 7284

Pendente, struttura in ottone naturale
cristallo sfaccettato.
*Pendant, faceted crystal natural brass
structure.*

F) 7284/V

Pendente, struttura in ottone naturale
cristallo sfaccettato.
*Pendant, faceted crystal natural brass
structure.*





- A) SP132**
Smalto ambra. *Amber glaze.*
cm ø28x11h
- B) SP131**
Smalto arancio. *Orange glaze.*
cm ø28x11h
- C) SP134**
Placcato oro. *Gold plated.*
cm ø28x11,5h
- D) SP137**
Smalto ambra. *Amber glaze.*
cm ø58x16h

Design Simone Granchi 2018

Serie di specchi in maiolica smaltata. Lo specchio viene montato su un piano di plexiglas. Possibile illuminarli con una luce soffusa intorno allo specchio.
Series of mirrors in glazed majolica. The mirror is mounted on a Plexiglas top. Possible to illuminate with a soft light around the mirror

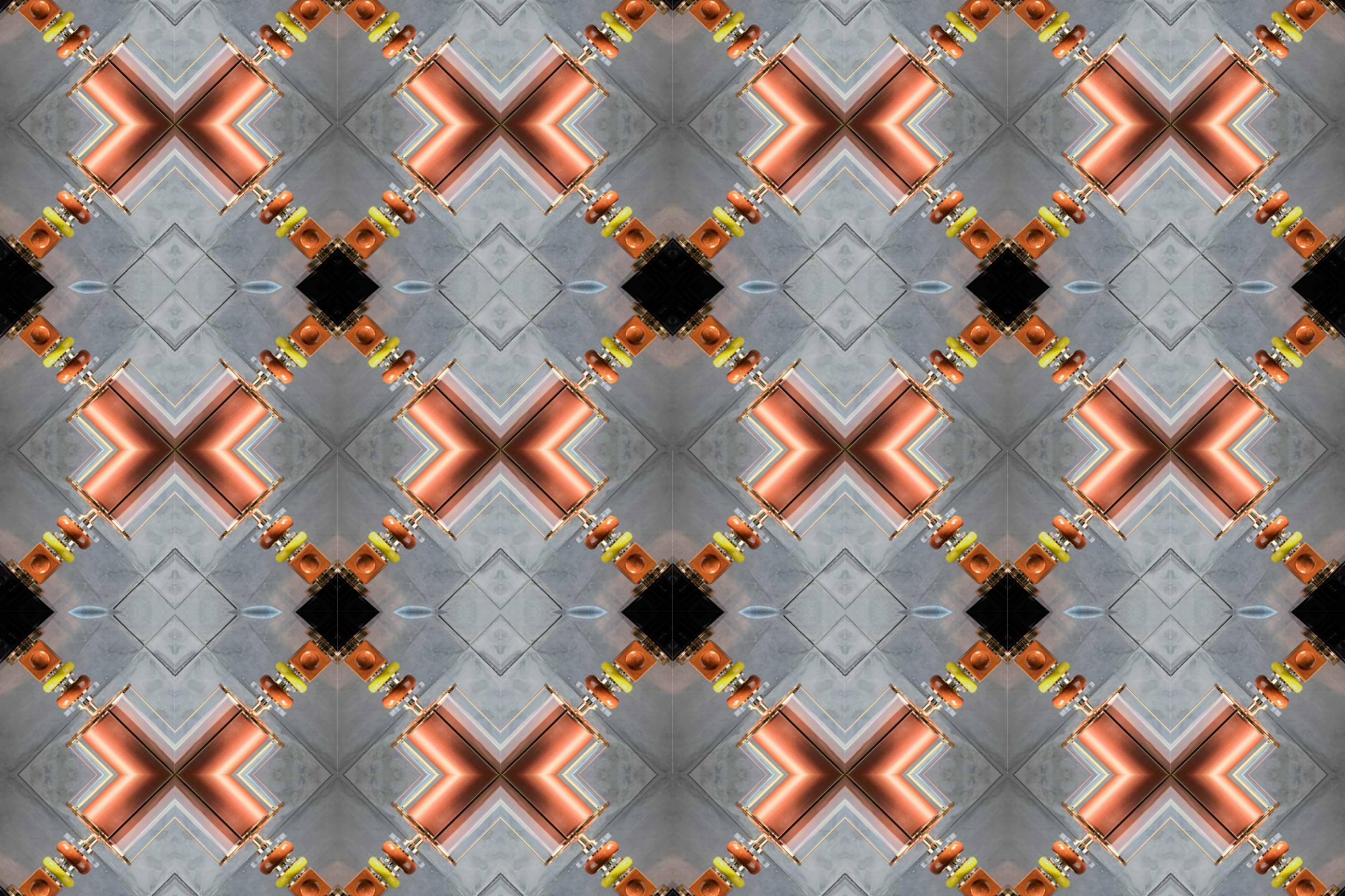




CL2098
 Design Granchi Studio 2018
 cm 32x88h | 1 E27x 60W

Lampada composta con maiolica smaltata arancio, giallo e dorata.
 Particolari in ottone dorato e plexiglass. Paralume in paglia dorata con interno in velluto arancio.
 Lamp composed with orange, yellow and golden enamelled majolica.
 Details in gilded brass and plexiglass. Lampshade in golden straw with orange velvet interior.

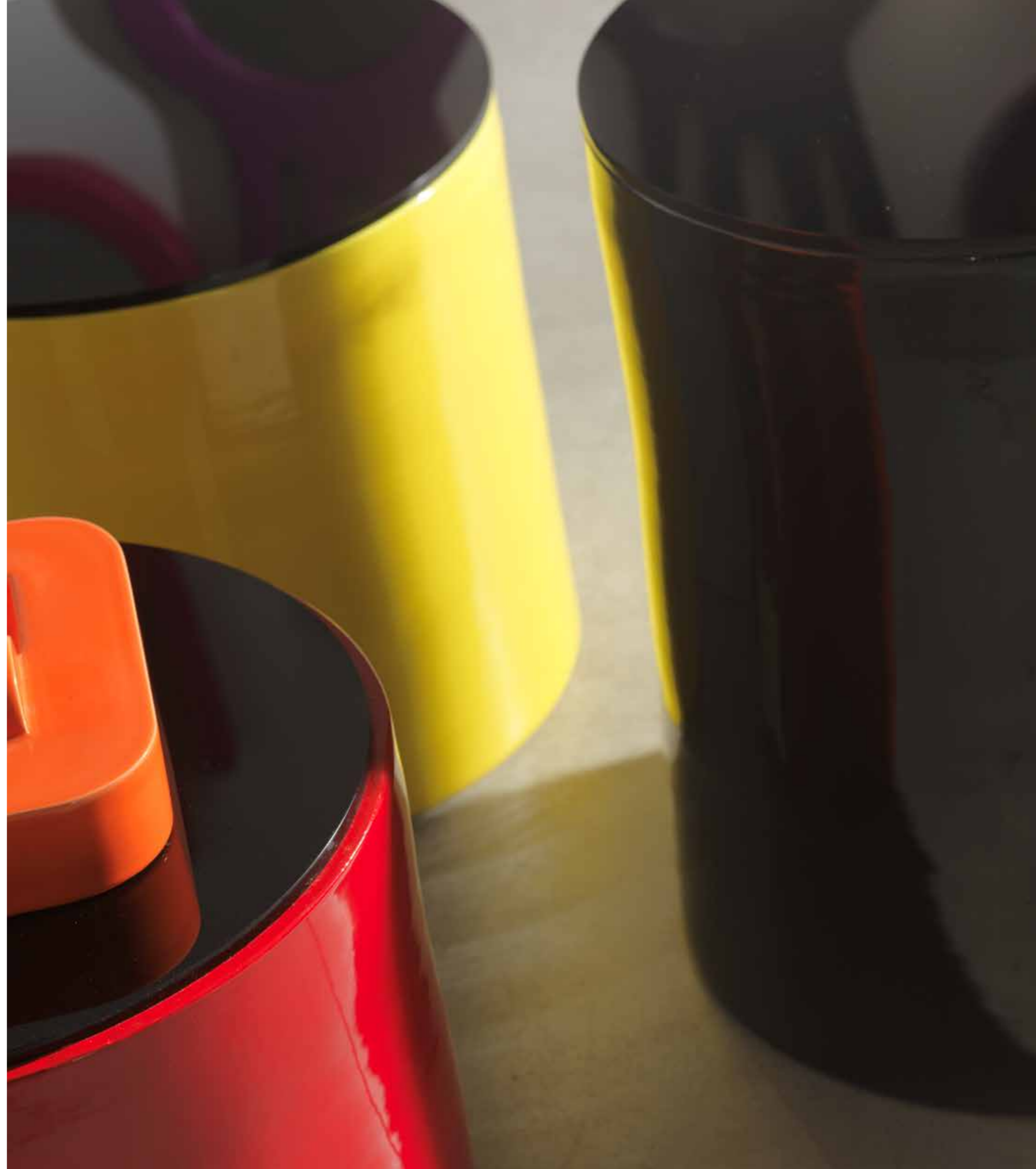






CL2085
Design Granchi Studio 2018
cm ø35x97h | 1 E27x 60W

Lampada composta da maiolica, ottone e plexiglass. Il paralume esterno è in ottone con plexiglass e il paralume interno in raso ambra.
Lamp composed with majolica, brass and plexiglass. The lampshade is double, in brass and plexiglass and in amber satin.



T2227
Smalto giallo. *Yellow glaze.*
cm 48x38h

T2227/R
Smalto rosso. *Red glaze.*
cm 48x38h

T2228
Smalto nero. *Black glaze.*
cm 40x50h

Design Simone Granchi 2018
Serie di tavolini in maiolica smaltata con top
il plexiglass nero.
*Series of coffee table in glazed majolica with black
plexiglass top.*





A) 5134 - B) 5135
Design Paolo Granchi 1973 - Re-styling 2018
cm 48x48x18h

Centrotavola modulare composto da 4 moduli in maiolica smaltata e placcata oro.
Modular bowl composed by 4 module in glazed majolica black and gold plated.



B



A



B



C

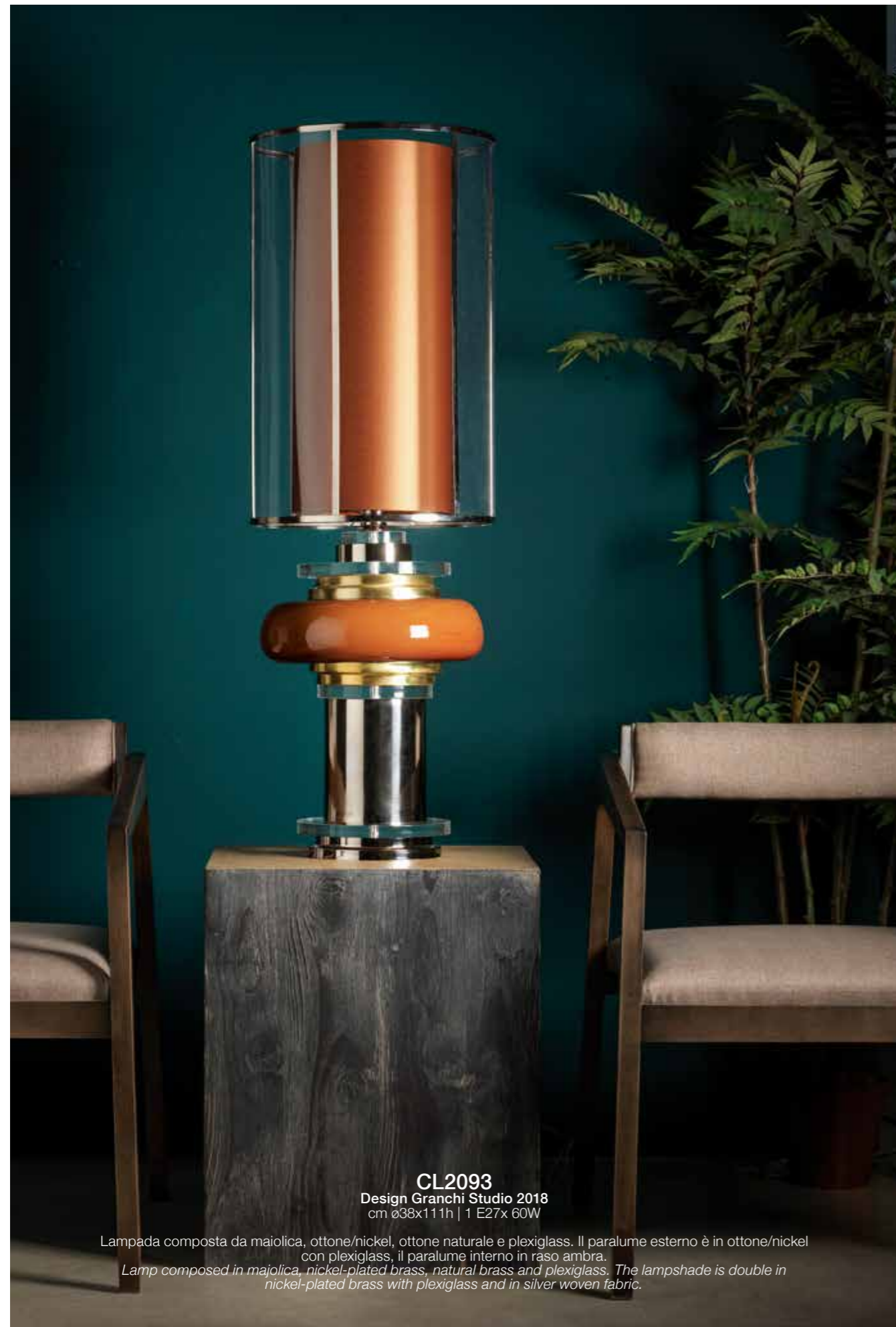


D

- A) MOD**
Smalto ambra. *Amber glaze.*
cm 24x24x18h
- B) MOD2**
Smalto nero. *Black glaze.*
cm 24x24x18h
- C) MOD3**
Smalto arancio. *Orange glaze.*
cm 24x24x18h
- D) MOD2/O**
Smalto nero, placcatura oro.
Black glaze and gold plated.
cm 24x24x18h

Design Paolo Granchi 1973 - Re-styling 2018
Modulo in maiolica smaltato e placcato con oro.
E' una scultura un oggetto che per la sua forma
modulare si duplica.
Module in glazed majolica and plated with gold.
Is a sculpture, object that due to its modular form
can be duplicated.





CL2093
 Design Granchi Studio 2018
 cm ø38x111h | 1 E27x 60W

Lampada composta da maiolica, ottone/nickel, ottone naturale e plexiglass. Il paralume esterno è in ottone/nickel con plexiglass, il paralume interno in raso ambra.
Lamp composed in majolica, nickel-plated brass, natural brass and plexiglass. The lampshade is double in nickel-plated brass with plexiglass and in silver woven fabric.



CL2092
 Design Granchi Studio 2018
 cm ø38x106h | 1 E27x 60W

Lampada composta da maiolica, ottone/nickel, plexiglass e base in legno laccato nero lucido. Il paralume esterno è in ottone/nickel con plexiglass, il paralume interno in raso ambra.
Lamp composed in majolica, nickel-plated brass, plexiglass and base in glossy black lacquered wood. The lampshade is double in nickel-plated brass with plexiglass and in silver woven fabric.

T2226
Design Granchi Studio 2018
cm 150x50x94h

Consolle composta da sfere in maiolica smaltata ambra. Colonne e top in legno laccato nero lucido.
Console composed by amber glazed spheres in majolica. Columns and top in glossy black lacquered wood.







7294
Design Francesca Granchi 2018
cm ø91x115h | 9 E14x 40W

Lampadario in ottone composto con maiolica smaltata e particolari in plexiglass.
La struttura centrale è in ottone in finitura nikel satinato mentre il paralume esterno in nikel lucido, il paralume interno è in seta.
Brass chandelier composed with glazed majolica and Perspex details. The central structure is in brass in satin nickel finish, while the external shade in polished nickel, the inside lampshade is in silk.

CL2090
Design Granchi Studio 2018
cm ø35x88h | 1 E27x 60W

Lampada composta da maiolica, ottone/nickel e dorato, plexiglas e base in marmo. Il paralume esterno è in ottone/nickel con plexiglass, il paralume interno in tessuto lamé argento.
Lamp composed in majolica, nickel and gold plated brass, plexiglas and marble base. The lampshade is double in nickel-plated brass with plexiglass and in fabric silver laminated.





CL2089
Design Granchi Studio 2018
cm ø35x85h | 1 E27x 60W

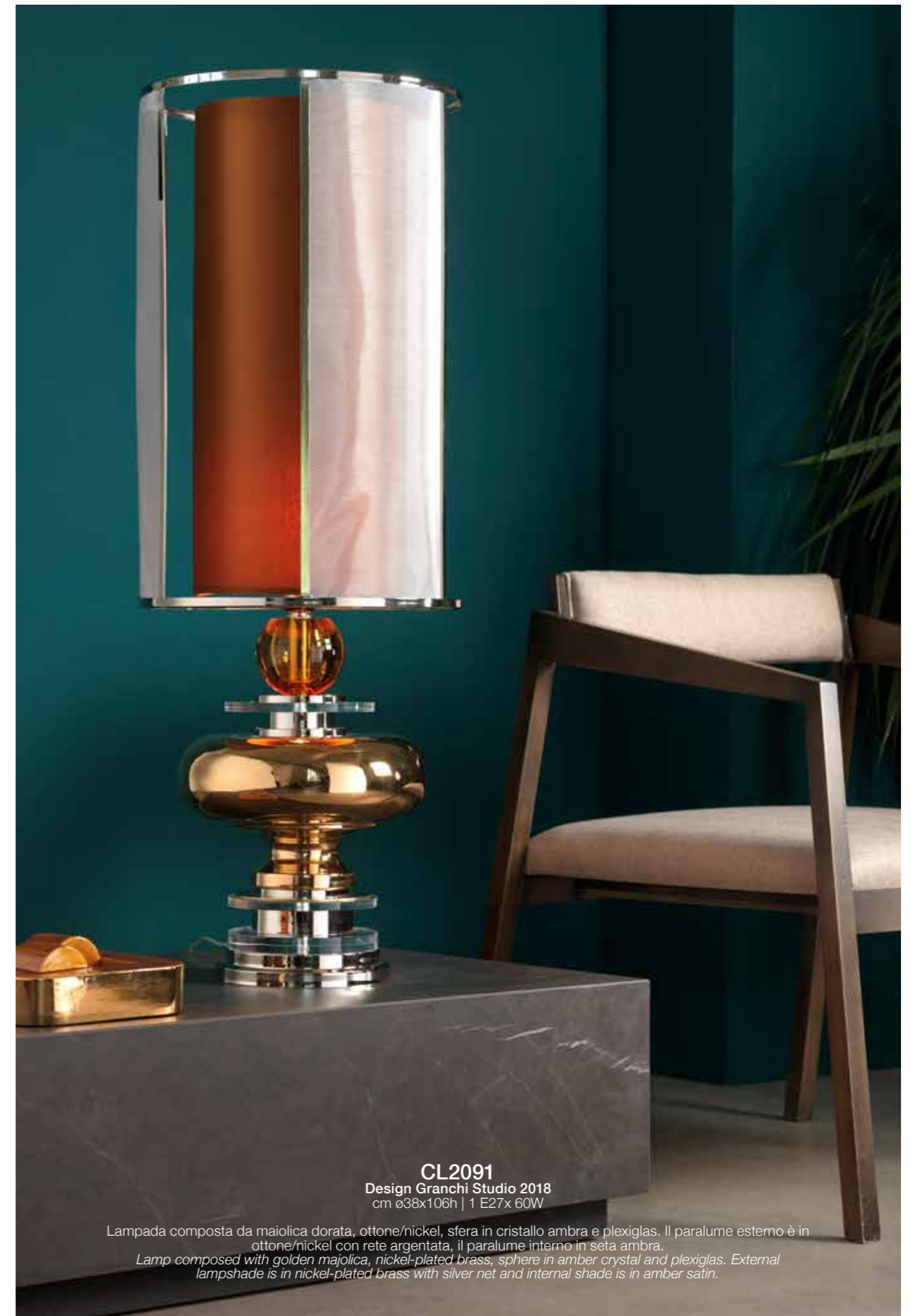
Lampada composta da maiolica, ottone/nichel e plexiglass. Il paralume esterno è in ottone/nichel con plexiglass, il paralume interno è in tessuto raso ambra.
Lamp composed in majolica, nickel-plated brass and plexiglass. The lampshade is double in nickel-plated brass with plexiglass and in silver woven fabric.



CL2086

Design Granchi Studio 2018
cm ø35x97h | 1 E27x 60W

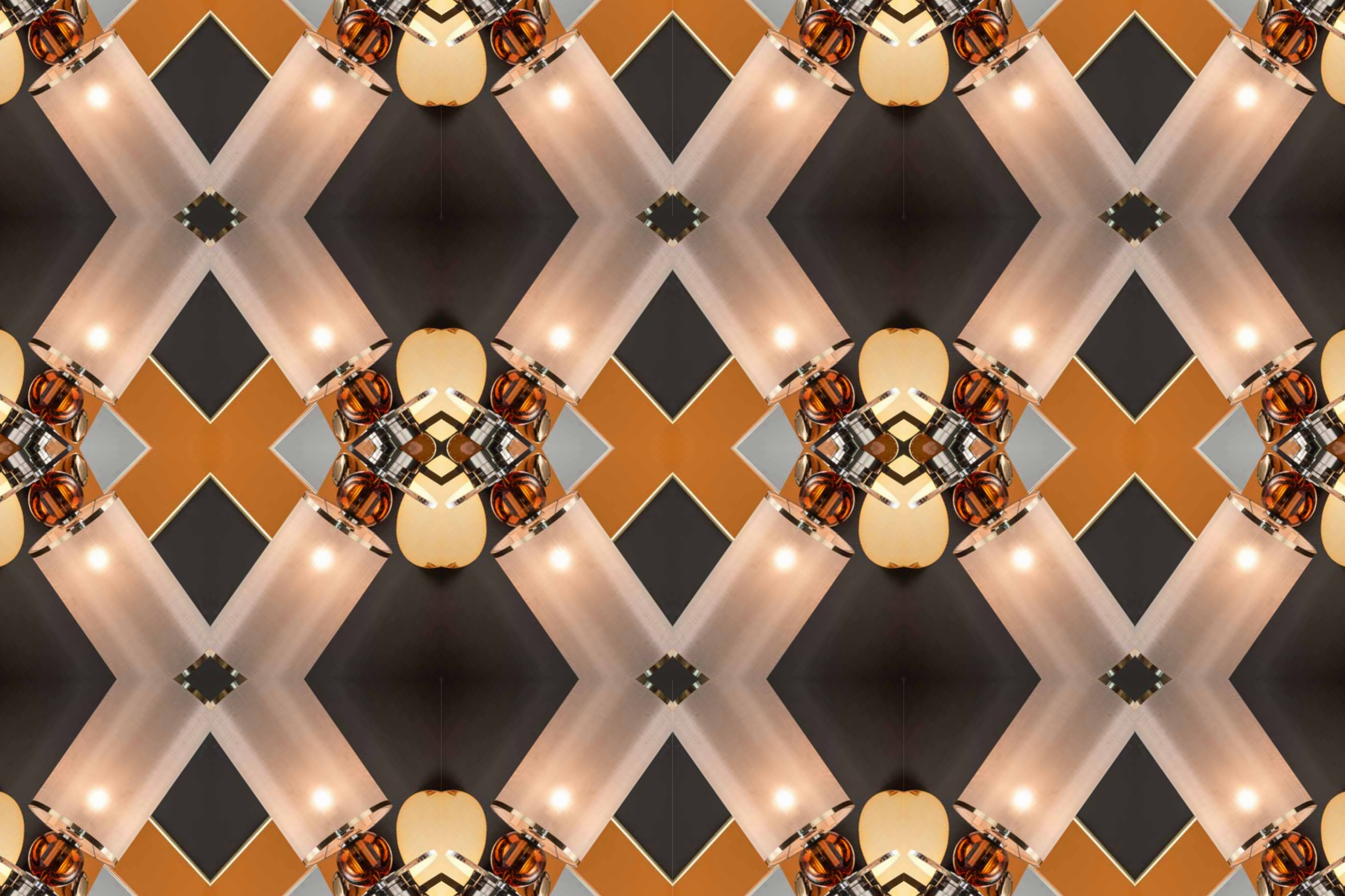
Lampada composta da maiolica, ottone/nickel e plexiglas. Il paralume esterno è in ottone/nickel con rete argentata, il paralume interno in seta nera.
Lamp composed with majolica, nickel-plated brass and plexiglas. External lampshade is in nickel-plated brass with silver net and internal shade is in black satin.



CL2091

Design Granchi Studio 2018
cm ø38x106h | 1 E27x 60W

Lampada composta da maiolica dorata, ottone/nickel, sfera in cristallo ambra e plexiglas. Il paralume esterno è in ottone/nickel con rete argentata, il paralume interno in seta ambra.
Lamp composed with golden majolica, nickel-plated brass, sphere in amber crystal and plexiglas. External lampshade is in nickel-plated brass with silver net and internal shade is in amber satin.





Z624

Design Simone Granchi 2018

cm 25x31x58h | 1 E27x60W

Paralume - Lampshade cm 20x35h

*Applique in ottone dorato e nickel con particolari in maiolica ambra, plexiglas e cristallo ambrato.
Il paralume è in lamé oro.
Wall lamp in golden brass and nickel with details in amber glaze majolica, plexiglas and amber crystal.
The lampshade is in gold laminate fabric.*



CL2095
Design Granchi Studio 2018
cm ø42x95h | 1 E27x 60W

Lampada composta in maiolica smaltata nera e arancio, ottone/nickel e dorato e plexiglass.
Il paralume è in seta nero.
*Lamp composed in majolica glazed in black and orange, nickel and gold-plated brass.
Lampshade is black silk.*



CL2094
Design Granchi Studio 2018
cm ø48x79h | 1 E27x 60W

Lampada composta da maiolica in ambra e nera, ottone dorato.
Il paralume è doppio in chintz nero interno oro e raso ambra.
*Lamp composed in majolica in amber and black, golden brass.
The lampshade is double in black-chintz gold interior and amber satin.*



Z631
Design Simone Granchi 2018
cm 45x180h | 2 E27x60W

Lampada da terra in ottone dorato e nickel, parte centrale in maiolica ambrata e plexiglas.
Il paralume è in raso ambra.
*Floor lamp in gilded and nickel brass, central part in amber glazed majolica amber and Plexiglas.
The lampshade is in amber silk.*







A

A) 5137
Smalto arancio. *Orange glaze.*
cm 30x25x8h

B) 5136
Smalto ambra. *Amber glaze*
cm 30x25x8h.

C) 5138
Smalto bianco e placcatura in platino.
White glaze and platinum plated.
cm 30x25x8h

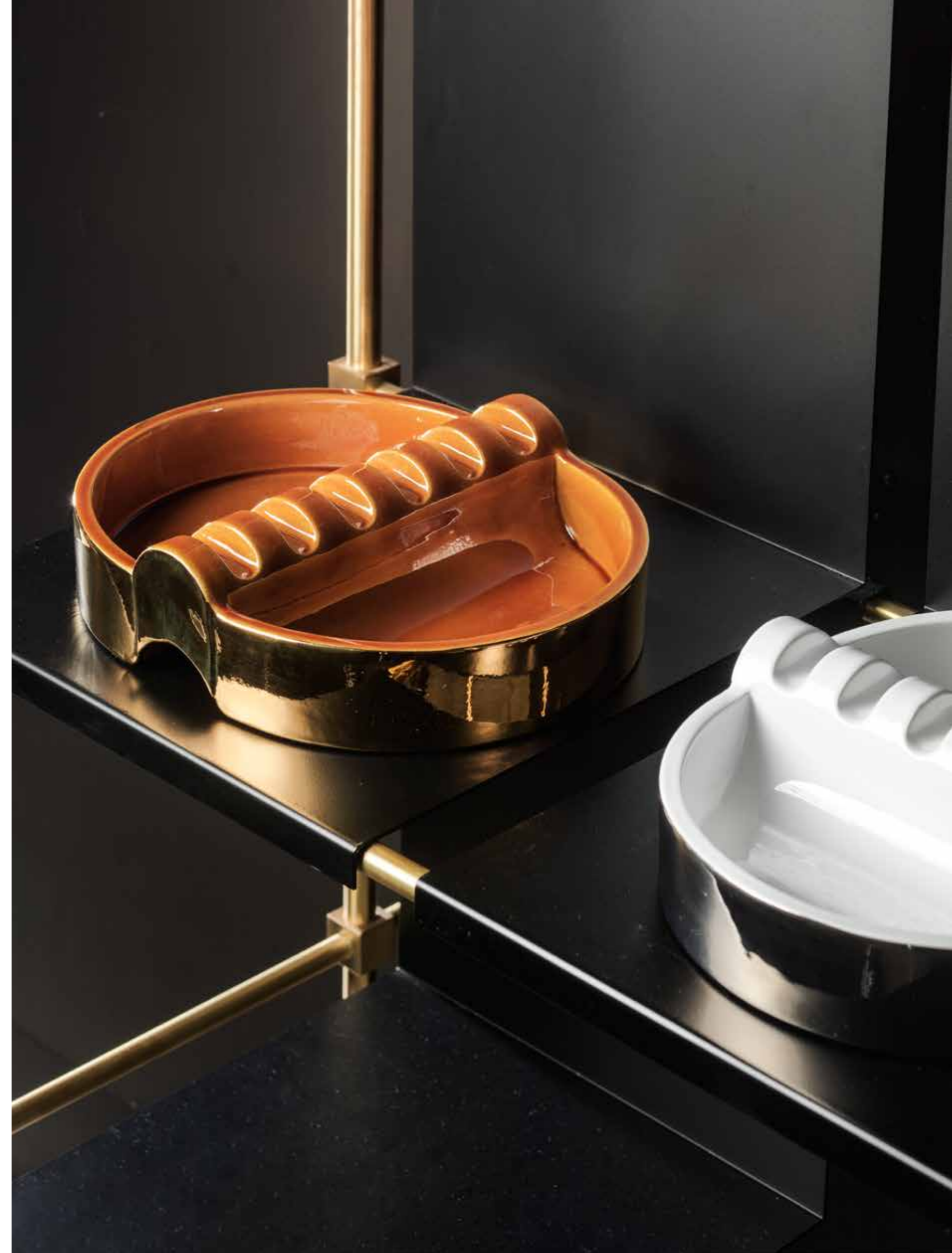


B

Design Paolo Granchi 1973 - Re-styling 2018
Posacenere o centrotavola in maiolica smaltato e
placcato con oro o platino.
*Ashtray or centerpiece in glaze majolica and plated with
gold or platinum.*



C



A) 5139
Smalto nero e placcatura oro.
Black glaze and gold plated.
cm 22,5x22,5x7h

B) 5140
Smalto ambra e placcatura oro.
Amber glaze and gold plated.
cm 22,5x22,5x7h

C) 5141
Smalto arancio. *Orange glaze.*
cm 22,5x22,5x7h

Design Paolo Granchi 1973 - Re-styling 2018
Piccolo centrotavola in maiolica smaltata
e placcato con oro.
Small bowl in glaze majolica and plated with gold.





7287
Design Granchi Studio 2018
cm ø36x110h | 1 E27x 60W

Sospensione con paralume esterno in ottone nickel con plexiglas, paralume interno in seta ambra. Il sotto è in maiolica ambra con plexiglas e ottone cromato.

Suspension lamp with external shade in nickel-plated brass with plexiglas, inner lampshade in amber silk.

The bottom is in amber majolica with plexiglas and chromed brass.



7288
Design Granchi Studio 2018
cm ø36x110h | 1 E27x 60W

Sospensione con paralume esterno in ottone nickel con rete argentata, paralume interno in seta nera. Il sotto è in maiolica smaltata con plexiglas e ottone cromato.

Suspension with external shade in nickel brass with silver net, internal shade in black silk. The bottom is in glazed majolica with plexiglas and chromed brass.



7289
Design Granchi Studio 2018
cm ø36x110h | 1 E27x 60W

Sospensione con paralume esterno in ottone nickel con plexiglas, paralume interno in seta ambra. Il sotto è in maiolica smaltata con plexiglas e ottone cromato.

Suspension lamp with external shade in nickel-plated brass with plexiglas, inner lampshade in amber silk.

The bottom is in majolica glazed with plexiglas and chromed brass.



7290
Design Granchi Studio 2018
cm ø36x110h | 1 E27x 60W

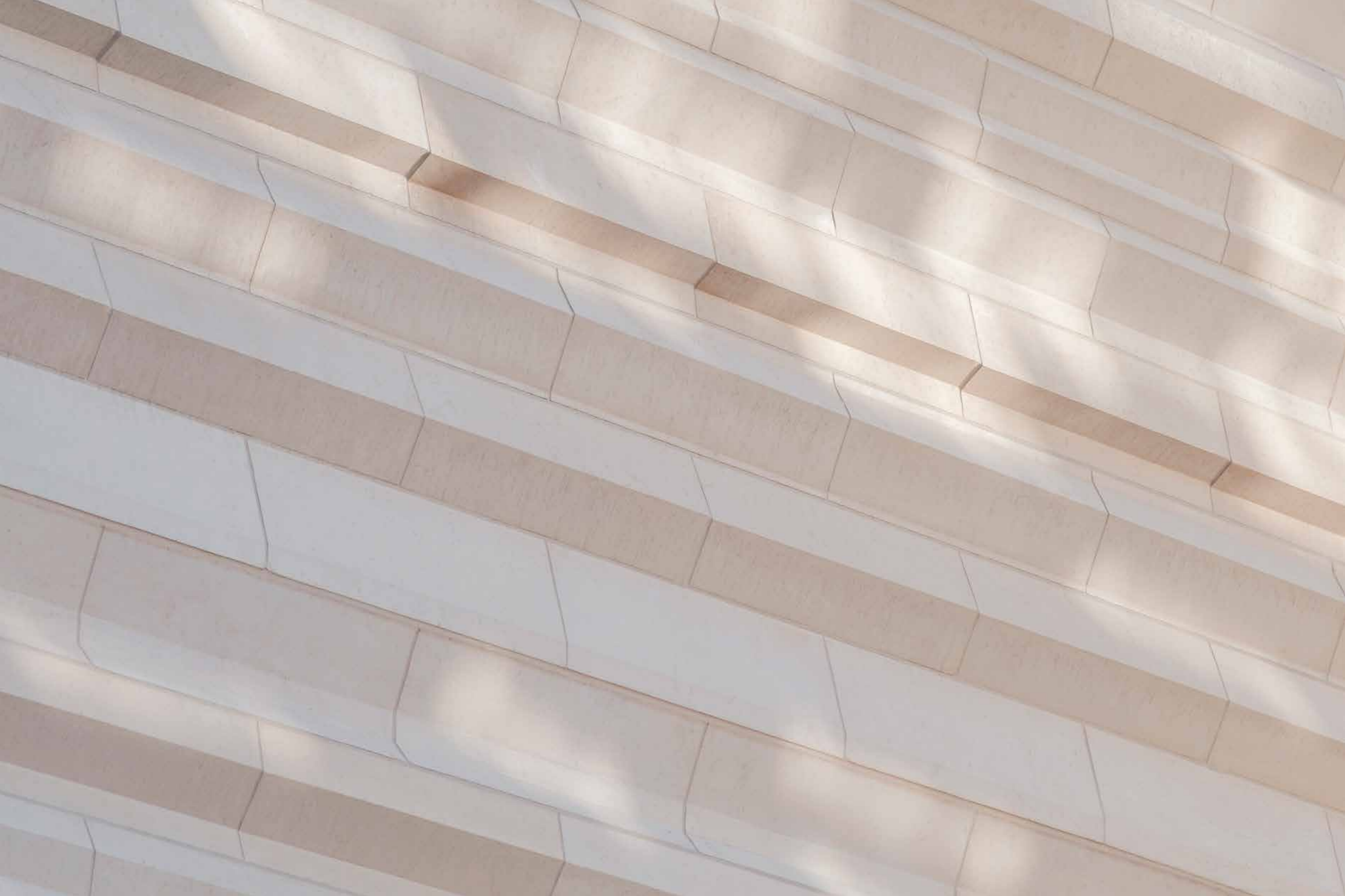
Sospensione con paralume esterno in ottone nickel con plexiglas, paralume interno in lamé oro. Il sotto è in maiolica placcata platino e ottone nickel e dorato.

Suspension with external shade in nickel brass with plexiglas, internal shade in laminated gold fabric. The bottom is in majolica plated platinum and nickel and golden brass.



7291
Design Granchi Studio 2018
cm ø36x110h | 1 E27x 60W

Sospensione con paralume il velluto blue. il sotto è in maiolica blu , plexiglas e ottone nickel e dorato. *Suspension with blue velvet lampshade. Bottom part is in majolica blue glazed, plexiglas and nickel and golden brass.*





7285
Design Simone Granchi 2016
cm150x63x120h | 16x E14

Lampadario ovale in ottone in finitura oro brown e in nikel spazzolato con applicazioni di vetro fatto a mano.
Paralume in shantung di seta avorio.
*Oval brass chandelier in brown gold finish and brushed nickel with handmade glass applications.
Lampshade in ivory silk shantung*



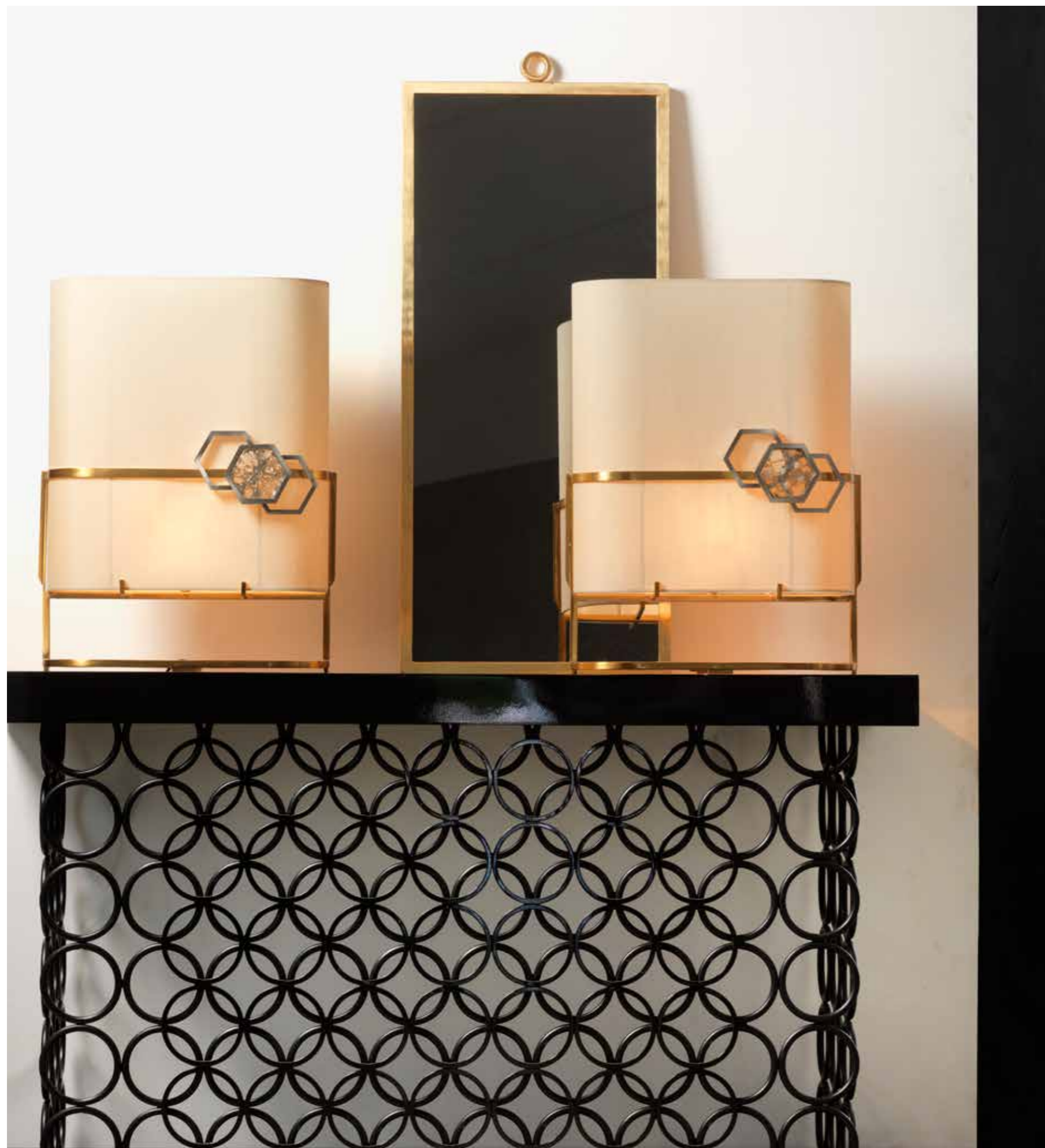
A) 7292 - B) 7293
Design Granchi Studio 2018
cm ø25x100h | lighting LED

Sospensione in ottone dorato e nikel satinato con intarsi in vetro inciso . Il paralume è in shantung di seta.
Suspension in golden brass and nickel satin with details in engraved glass. Lampshade is in ivory silk shantung.



A

B



CL2097
Design Simone Granchi 2018
cm 46x20x63h | 1 E27x 60W

Lampada in ottone dorato e nickelato con particolare vetro. Il paralume è in seta.
*Lamp in gilded and nickel-plated brass with accent glass.
Lampshade is in silk.*



Z625
Design Simone Granchi 2018
cm 27x70h | 2 E14x40W

Applique in ottone dorato e nikel satinato con intarsi in vetro inciso. Il paralume è in shantung di seta.
Wall lamp in golden brass and nickel satin with details in engraved glass. Lampshade is in ivory silk shantung.



Z623
Design Simone Granchi 2018
cm 33x168h | lighting LED

Lampada da terra formata da struttura in ottone dorato e nickel satinato con intarsi in vetro inciso.
Il paralume è in shantung di seta avorio.
*Floor lamp composed by golden brass structure and nickel satin finish with details in engraved glass.
The lampshade is in ivory silk shantung.*





A

B

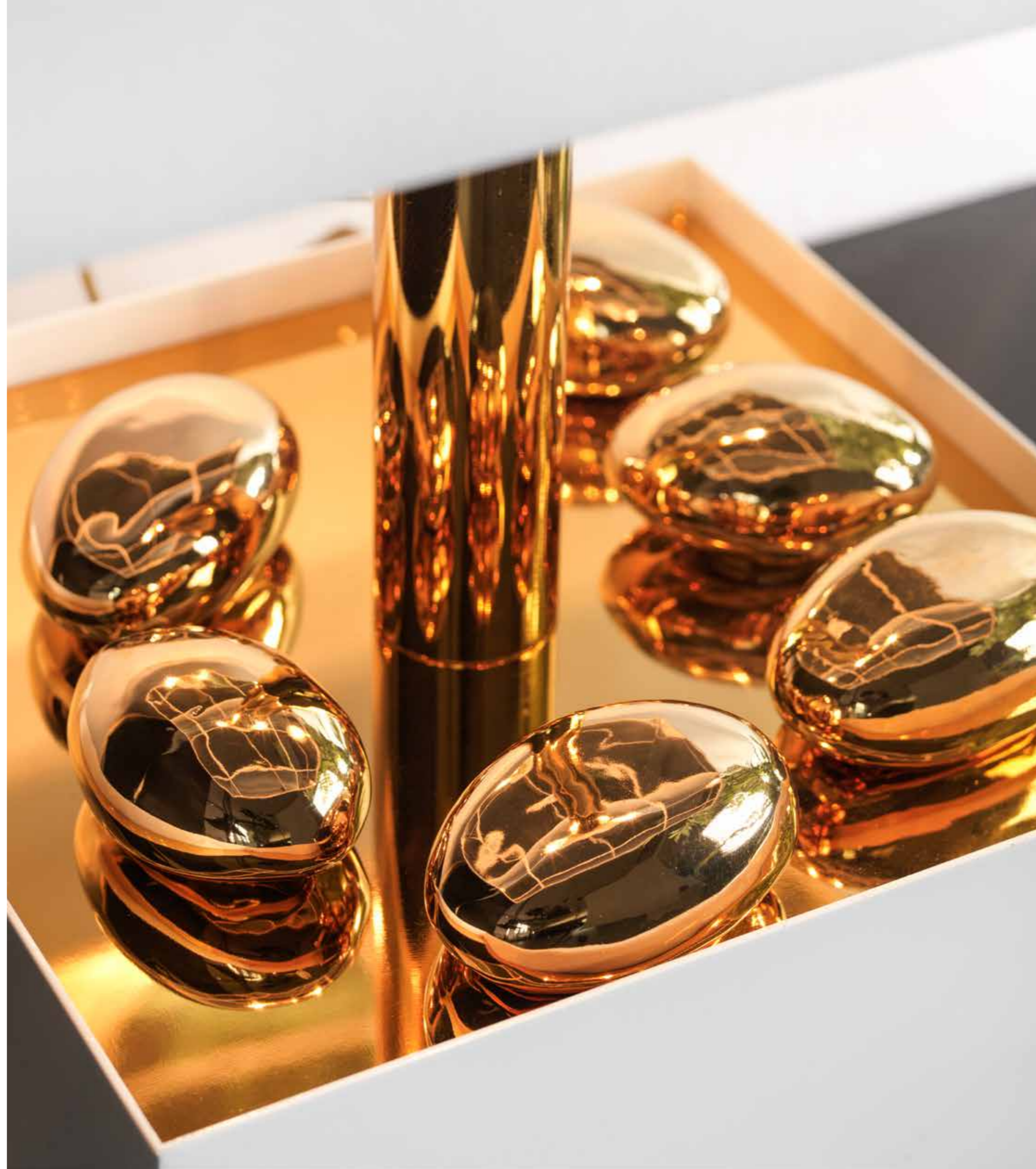
D

C

- A) 2534
cm ø13x75h
- B) 2535
cm ø15x57h
- C) 2533
cm ø21x25hh
- D) 2536
cm ø22x31h

Design Simone Granchi 2014
Vaso in maiolica smaltato a mano e placcato oro zecchino.
Majolica vase hand enamelled and pure gold plated.





CL2105
Design Simone Granchi 2018
cm 35x35x71h | 2 E27x 60W

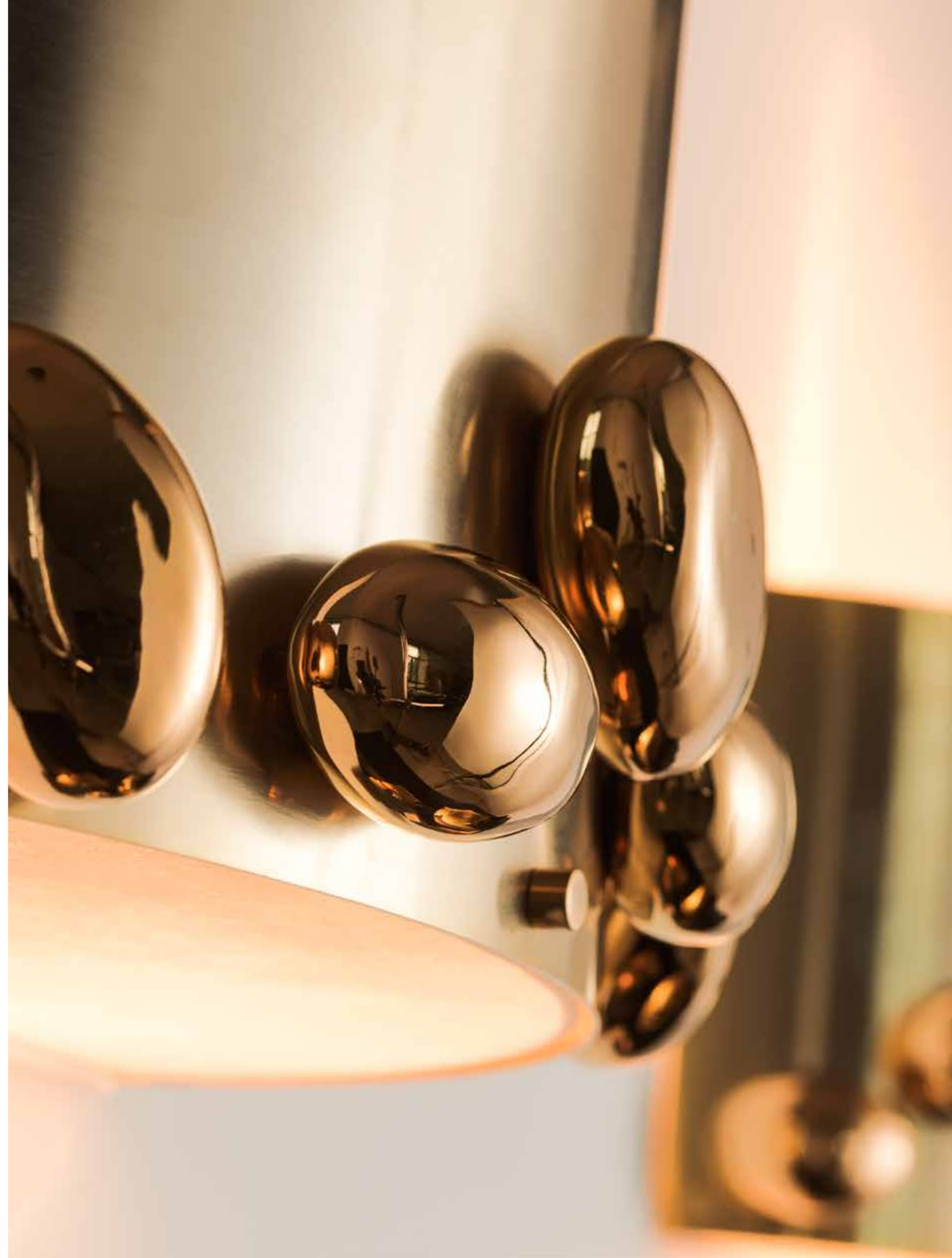
Lampada in ottone dorato e laccato bianco lucido con pepite in maiolica dorata.
Paralume in chintz bianco interno oro.
*Lamp in gilded brass and glossy white lacquered with golden majolica nuggets.
Lampshade in white chintz inside gold.*





Z627
Design Simone Granchi 2018
cm 50x20x25h | 2 E14x40W

Applique in ottone dorato satinato con applicazione di pepite in maiolica dorate. Il tappo è in seta avorio.
Wall lamp in satin golden brass with golden nuggets in majolica. The cover light is in ivory silk.



T2225
Design Simone Granchi 2018
cm 148x45x90h
Base - *basement* cm154x45h | Piano - *top* cm 148x45h
Consolle in ferro laccato nero opaco e lucido. Top e base in legno laccato nero lucido.
Console in matt and glossy black lacquered iron. Top and base in glossy black lacquered wood.





2583
Design Paolo Granchi 1978
cm 38x38h

Vaso in maiolica smaltato in nero con decoro oro e platino.
Majolica vase glazed in black with gold and platinum decoration.





2585
Design Paolo Granchi 1978
cm 26x48h

Vaso in maiolica smaltato in nero
con decoro oro e platino.
*Majolica vase glazed in black with gold and
platinum decoration.*

2584
Design Paolo Granchi 1978
cm 38x38h

Vaso in maiolica smaltato in nero
con decoro oro e platino.
*Majolica vase glazed in black with gold and
platinum decoration.*





2589
Design Paolo Granchi 1978
cm 25x51h

Vaso in maiolica smaltato in nero con decoro oro e platino
Majolica vase enamelled in black with gold and platinum decoration.



2588
Design Paolo Granchi 1978
cm 25x51h

Vaso in maiolica smaltato in nero con decoro oro e platino
Majolica vase enamelled in black with gold and platinum decoration.

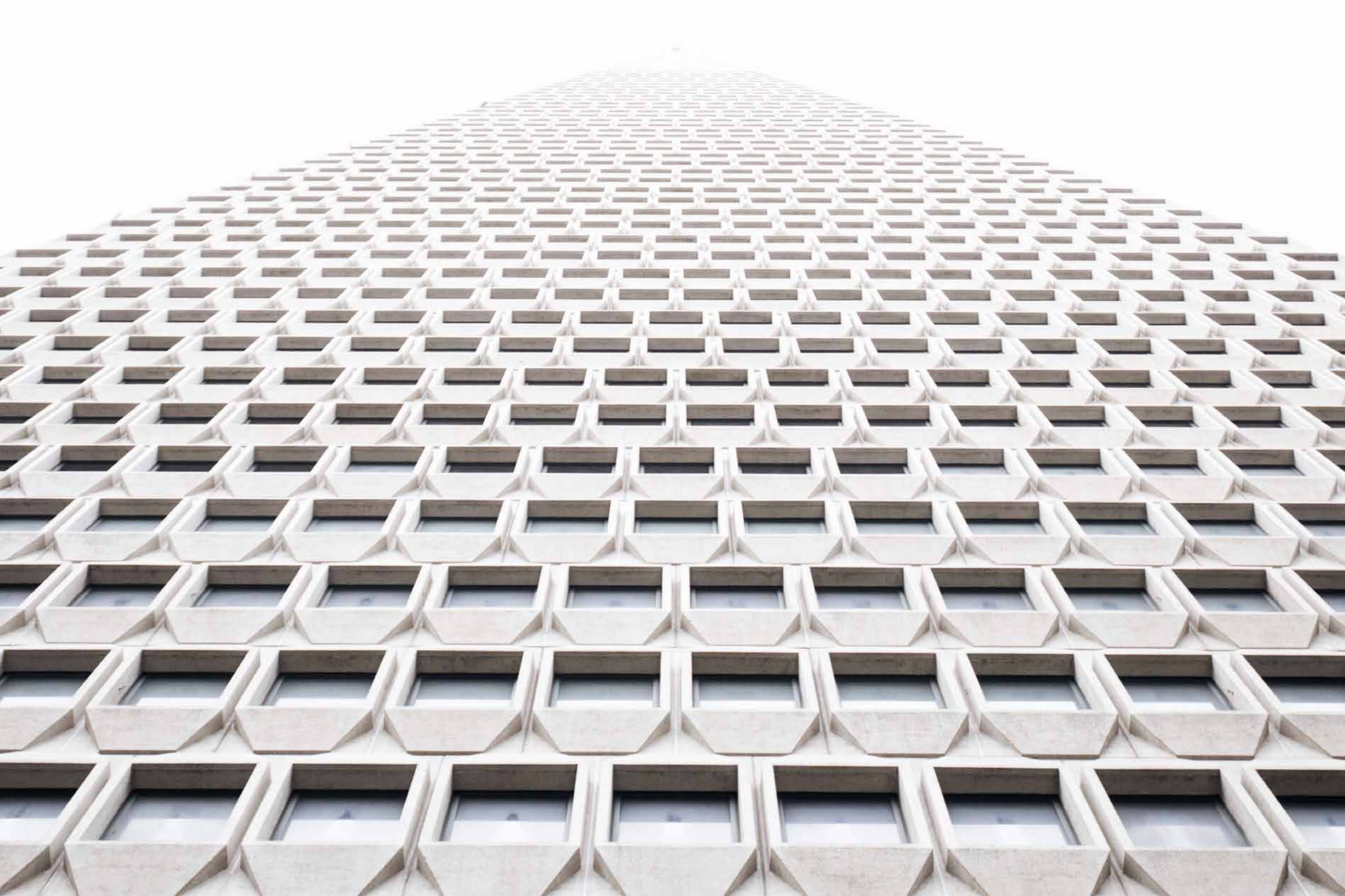
2587
Design Paolo Granchi 1978
cm 37x11x52h

Vaso in maiolica smaltato in nero con decoro
oro e platino.
*Majolica vase glazed in black with gold and platinum
decoration.*

2586
Design Paolo Granchi 1978
cm 50x14x63h

Vaso in maiolica smaltato in nero con decoro
oro e platino.
*Majolica vase glazed in black with gold and platinum
decoration.*





7279/B
Design Simone Granchi 2017
cm ø87x28h | 3xE27 - 60W

Lampadario con metallo ondulato laccato in bianco lucido e interno oro.
Chandelier in corrugated metal and outside laquered in glossy white and inside laquered in gold.





7282
Design Simone Granchi 2017
cm 60x38x20h | 1xE27 - 60W

Lampadario con metallo ondulato laccato in grigio chiaro matt e interno oro.
Chandelier in corrugated metal and outside laquered in matt light grey and inside laquered in gold.



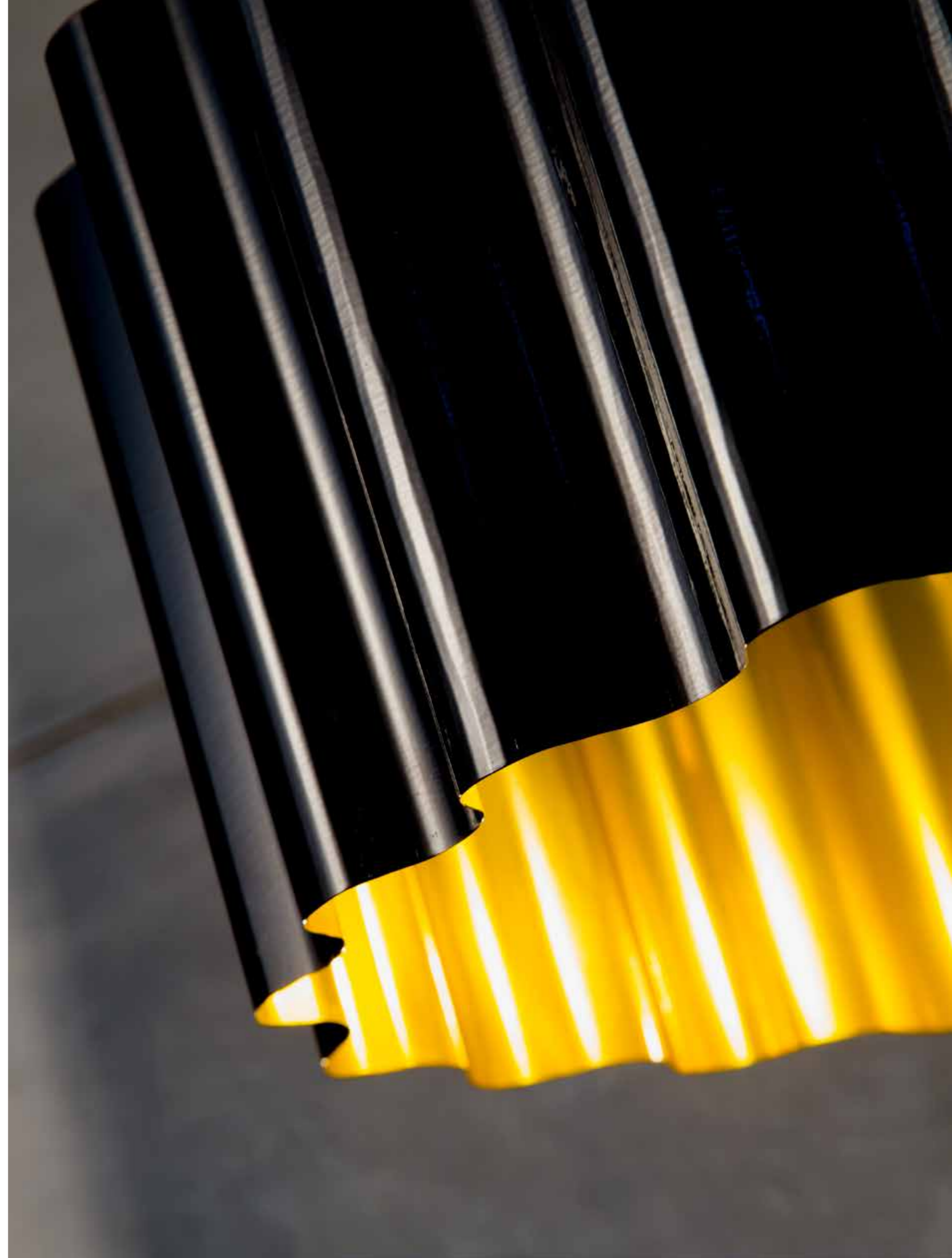
7283
Design Simone Granchi 2017
cm 33x20x20h | 1xE27 - 60W

Lampadario con metallo ondulato laccato in avorio matt e interno oro.
Chandelier in corrugated metal and outside laquered in matt ivory and inside laquered in gold.



7281/N
Design Simone Granchi 2017
cm ø54x20h | 1xE27 - 60W

Lampadario con metallo ondulato laccato in nero lucido e interno oro.
Chandelier in corrugated metal and outside laquered in glossy black and inside laquered in gold.







CL2107
Design Simone Granchi 2018
cm 45x70h | 2 E27x 60W

Lampada in cristallo composta con ottone nickel e plexiglas. Paralume doppio; fuori in tessuto lamé argento, dentro in seta ambra.
Crystal lamp composed by nickel brass and plexiglas. Double lampshade; outside in laminated silver fabric, inside in amber silk.



CL2100
Design Simone Granchi 2018
cm ø45x66h | 2 E27x 60W

Lampada in ottone nickel con particolari in cristallo e maiolica dorata. Il paralume è doppio; fuori in tessuto lamè argento e dentro in seta avorio.
*Lamp in nickel-plated brass with details in crystal and golden majolica.
The lampshade is double; outside in laminated silver fabric and inside in ivory silk.*



SP143
Design Granchi Studio 2018
cm 71x90,5h

Specchio in legno laccato ambra con cornice ottone e applicazione di pepite dorate in maiolica.
Mirror in amber lacquered wood with brass frame and golden nuggets in majolica.

SP142
Design Granchi Studio 2018
cm 71x90,5h

Specchio in legno laccato verde con cornice ottone e applicazione di pepite dorate in maiolica.
Mirror in green lacquered wood with brass frame and golden nuggets in majolica.



CL2099
Design Simone Granchi 2018
cm ø45x73h | 2 E27x 60W

Lampada in cristallo composta con maiolica verde, ottone nickelato e plexiglass. Il paralume è doppio fuori in tessuto lamé argento e dentro in seta verde.
Crystal lamp composed with green majolica, nickel-plated brass and plexiglass. The double lampshade is double, outside in laminated silver fabric and inside in green silk.





Q7
Design Simone Granchi 2017
cm 75x7x200h

Quadro decorativo spatolato a mano con particolari in ottone argentato.
Decorative frame hand made with silver brass details.







CL2109
Design Simone Granchi 2018
cm 50x51h

Lampada completamente in maiolica in encausto bianco e smalto. Il paralume interno è placcato oro zecchino.
Lamp completely in majolica in encaustic white and glaze. Lampshade inside is in pure gold plated

CL2109/B
Design Simone Granchi 2018
cm 50x51h

Lampada completamente in maiolica in encausto bianco. Il paralume interno è placcato oro zecchino.
Lamp completely in majolica in encaustic white. Lampshade inside is in pure gold plated



CL2075/B
Design Simone Granchi 2017
cm 39x39x84h | 2xE27 - 60W

Lampada in legno laccato con maniglie e base in ottone argento spazzolato.
Paralume bianco in velluto con interno oro.
*White lacquered wooden lamp with brass brushed handles and details in brushed silver finish.
White velvet shade with gold inside.*

SP144
Design Granchi Studio 2018
cm 71x90,5h

Specchio in legno in finitura encausto bianco con cornice ottone e applicazione di pepite
dorate e ambrate in maiolica.
*Wooden mirror in white encaustic finish with brass frame and application
of golden and amber nuggets majolica.*





VS121
Design Simone Granchi 2018
cm 29x81h

Vaso «smile» in maiolica con pepite oro e ambra.
Majolica vase "smile" with gold and amber nuggets.





2590
Design Simone Granchi 2018
cm 28x65h

Vaso in maiolica decorato con encausto
bianco e placcato oro.
*Majolica vase decorated with white encaustic
and gold-plated*

2591
Design Simone Granchi 2018
cm 28x73h

Vaso in maiolica decorato con encausto
bianco e placcato oro.
*Majolica vase decorated with white encaustic
and gold-plated*



DINO GOLD LAMP
DINO WHITE LAMP
Design Granchi Studio 2017
cm 43x22x34h | 1xE14

Dinosauro in maiolica inciso a mano smaltato
e placcato oro con paralume snodabile.
*Dino-Fully hand made majolica dinosaur hand glazed
and gold plated with movable shade.*

DINO PINK LAMP
DINO RED LAMP

Design Granchi Studio 2017
cm 43x22x34h | 1xE14

Dinosauro in maiolica inciso a mano con paralume snodabile.
Dino-Fully hand made majolica dinosaur with movable shade.

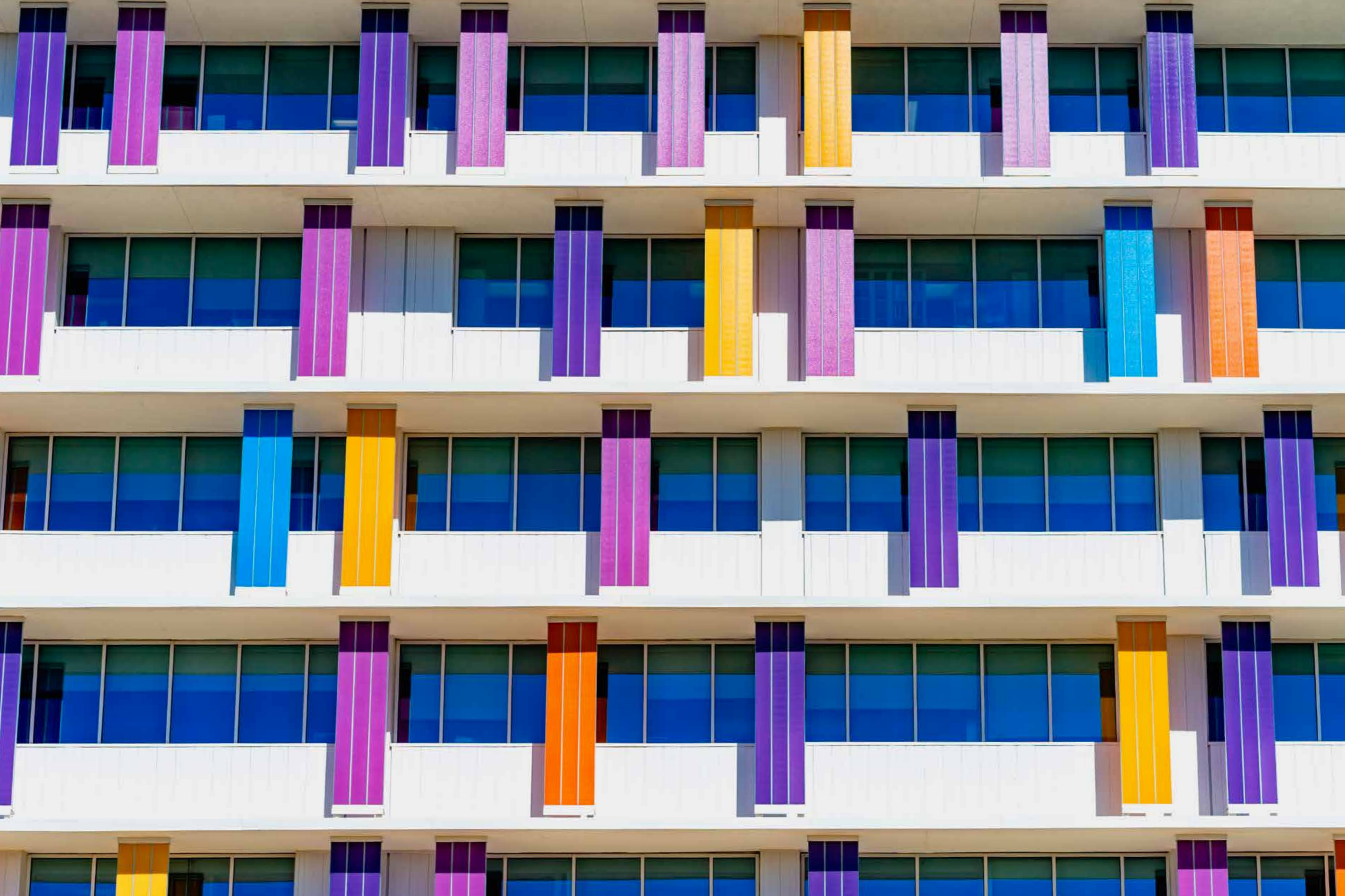






CL2084
 Design Simone Granchi 2017
 cm 58x30x45 | 1xG9

Lampada da tavolo in ottone naturale inciso a mano in "effetto tessuto" copri lampada e base in cristallo.
 Il paralume si muove su 360°.
 Table lamp in natural brass engraved by hands in "fabric effect", cover light bulb and base are in crystal.
 The lampshade turns on 360°.





- A) **SP141/1** Fuxia
cm 40x4x90h
- B) **SP141/2** Violet
cm 40x4x90h
- C) **SP141/3** Blue
- D) **SP141/4/M** Cipria metallizzato
Metallic blush pink
cm 40x4x90h
- E) **SP141/4** Cipria - *Blush pink*
cm 40x4x90h

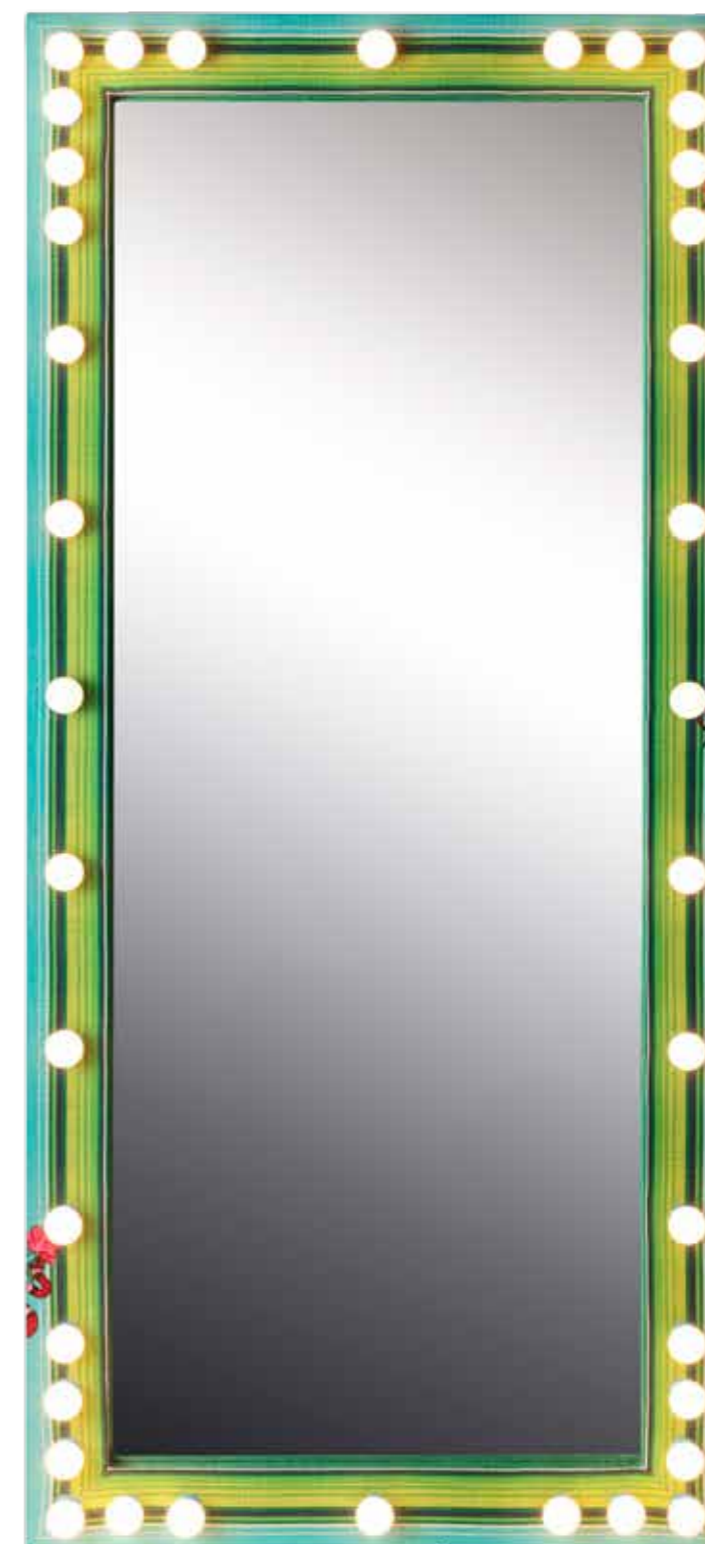
Design Simone Granchi 2018
Specchi in legno laccati in vari colori.
Wooden mirrors laquered in varied colors.





SP130
Design Simone Granchi 2017
cm 85x10x190h | 38xE14 - 4W

Specchio ricoperto di tessuto e decorazioni ricamate.
Mirror covered with fabric with embroidery and brass applications.



SP130/V
Design Simone Granchi 2017
cm 85x10x190h | 38xE14 - 4W

Specchio ricoperto di tessuto e decorazioni ricamate.
Mirror covered with fabric with embroidery and brass applications.



INDEX

2533	100	7279/B	122	Q7	140
2534	100	7281/N	126	SP120/1	16
2535	100	CL2075/B	147	SP130	170
2536	100	CL2084	163	SP130/V	171
2583	112	CL2085	47	SP131	40
2584	114	CL2086	68	SP132	40
2585	114	CL2087	30	SP133	4
2586	118	CL2088	27	SP134	40
2587	118	CL2089	67	SP135	4
2588	117	CL2090	64	SP136	4
2589	116	CL2091	69	SP137	40
2590	155	CL2092	57	SP138	4
2591	155	CL2093	56	SP141/1 FUXIA	167
5134	52	CL2094	75	SP141/2 VIOLET	167
5135	52	CL2095	74	SP141/3 BLUE	167
5136	80	CL2097	95	SP141/4 CIPRIA - BLUSH PINK	167
5137	80	CL2098	42	SP141/4/M CIPRIA METALLIZZATO	167
5138	80	CL2099	136	SP142	135
5139	82	CL2100	133	SP143	135
5140	82	CL2101	13	SP144	148
5141	82	CL2102	10	T2225	108
7282	124	CL2103	12	T2226	58
7283	125	CL2104	20	T2227	50
7284	36	CL2105	104	T2227/R	50
7284/1	36	CL2106	6	T2228	50
7284/AR	36	CL2107	131	VS121	152
7284/AR/1	36	CL2108	23	Z622	9
7284/AR/1/S	36	CL2109	145	Z623	98
7284/V	36	CL2109/B	145	Z624	72
7285	90	DINO GOLD LAMP	157	Z625	96
7287	84	DINO PINK LAMP	158	Z627	106
7288	84	DINO RED LAMP	158	Z628	15
7289	85	DINO WHITE LAMP	157	Z629	29
7290	85	MIX	165	Z630	24
7291	85	MOD	54	Z631	76
7292	92	MOD2	54		
7293	92	MOD2/O	54		
7294	63	MOD3	54		

Gli articoli delle collezioni sigma elle due sono realizzati con cura artigianale.
Ogni differenza tra i diversi prodotti non é da considerarsi come imperfezione,
ma come caratteristica stessa della lavorazione manuale.
Sigma elle due si riserva il diritto di apportare eventuali modifiche
ai prodotti per migliorarne l'aspetto tecnico ed estetico.
I colori degli oggetti riprodotti possono essere
non totalmente fedeli all'originale a causa della stampa su supporto cartaceo.

*All the items of sigma elle due collections are created with the most meticulous craftsmanship.
Any differences among the various products are not to be considered as imperfections
but rather, characteristics of working by hand.
Sigma elle due reserves all rights to modify the items in order
to improve their technical and aesthetic aspects.
The colours of the items reproduced
may not always be the same as the original due to the printing.*



SIGMA L2 Paolo Granchi srl
Via Degli Olmi, 145 | 50019 Sesto Fiorentino | FI - ITALY
Tel +39 055 4207107 | fax +39 055 4207158
info@sigma2.it | www.sigma2.it



 SIGMA L2
LIGHTING AND INTERIOR DESIGN