

**.Tom
DIXON.**

Gifts, tools & treasures

A collection of everyday home accessories, giftware and design objects formed from honest, resilient and heavyweight materials including copper, marble, cast iron, brass and wood.

The products are informed by British heritage and each piece is designed to be used or played with, to be treasured or to be given.

**Tom
DIXON.**

Form

BOWL TALL Set Small, Black & Copper (Set of 2)

BOWL TALL Set Large, Black & Copper (Set of 5)



Form

BOWL DEEP Set Small, Black & Brass (Set of 3)

BOWL DEEP Set Large, Black & Brass (Set of 2)



Scent CANDLES



Scent

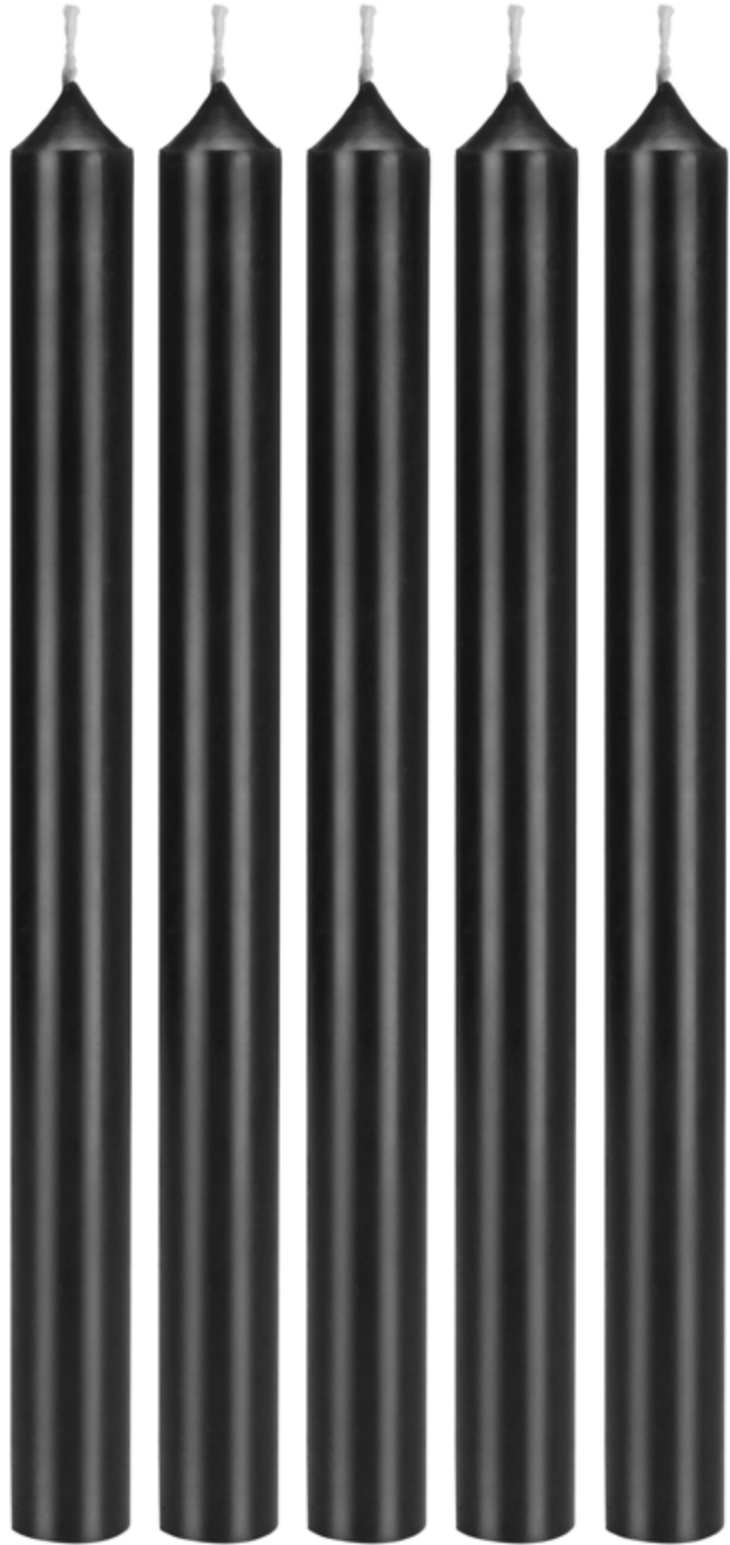
LONDON Tea Light Pack of 12

ROYALTY Tea Light Pack of 12

ORIENTALIST Tea Light Pack of 12



**Candle
TAPER Set Black**



**Candle
PILLAR Black**



Cast
GEM VASE TALL
GEM CANDLEABRA
GEM TEA LIGHTS
GEM VASE LARGE
GEM CANDLE STICK



**Bone
BOWL**





Hide

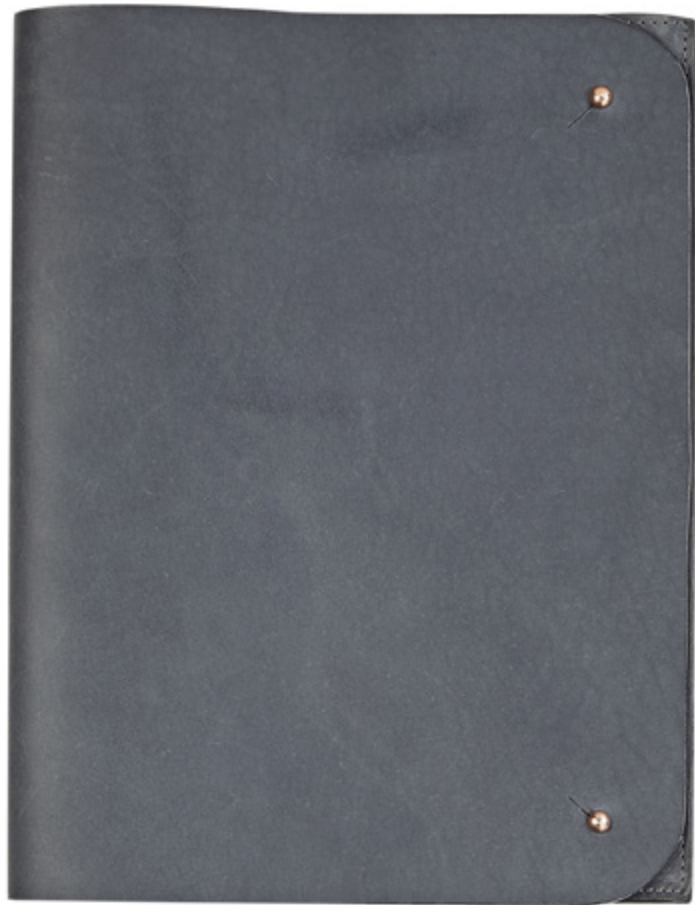
TABLET CASE

LARGE WALLET

KEY TAG

WALLET

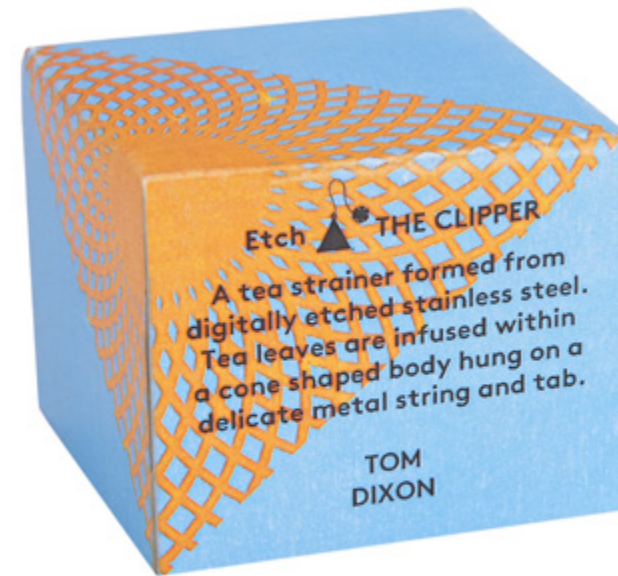
LUGGAGE TAG



Mug BONE CHINA



Etch THE CLIPPER



Tool BOOKWORM



Tool PERPETUAL CALENDAR



Tower
PEPPER GRINDER

SALT GRINDER

BOTTLE OPENER (Available 2014)

EGG TIMER (Available 2014)





Scent
CANDLES LARGE



Scent
CANDLE GIFT SET



Tower
PEPPER GRINDER
SALT GRINDER



Stone
CAKE STAND
Form
CAKE SLICE



Stone
CHOPPING BOARD
SPICE GRINDER
PESTLE & MORTAR



Form
MILK JUG

JUG

CADDY

SUGAR DISH & SPOON

TEAPOT

TRAY SQUARE



Cell
TEA LIGHT HOLDER



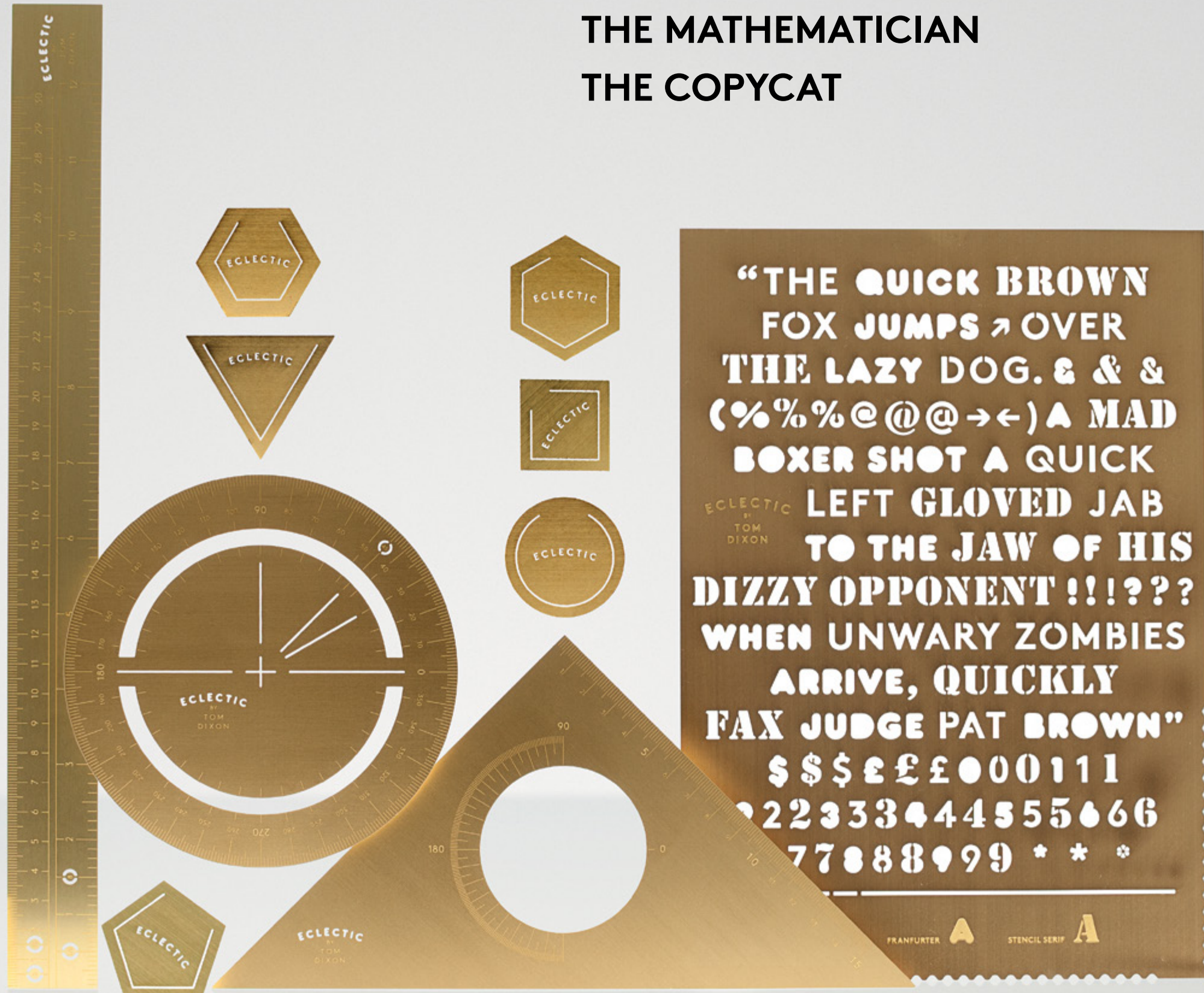
**Spun
VASE TRIO**



**Spun
VASE TALL**



Tool
THE GOLDEN RULE
THE CLIP
THE MATHEMATICIAN
THE COPYCAT



**“THE QUICK BROWN
FOX JUMPS OVER
THE LAZY DOG. & & &
(%%%@#@->←) A MAD
BOXER SHOT A QUICK
LEFT GLOVED JAB
TO THE JAW OF HIS
DIZZY OPPONENT !!!???
WHEN UNWARY ZOMBIES
ARRIVE, QUICKLY
FAX JUDGE PAT BROWN”**

\$\$\$£££00111
22333444555666
77888999 * * *

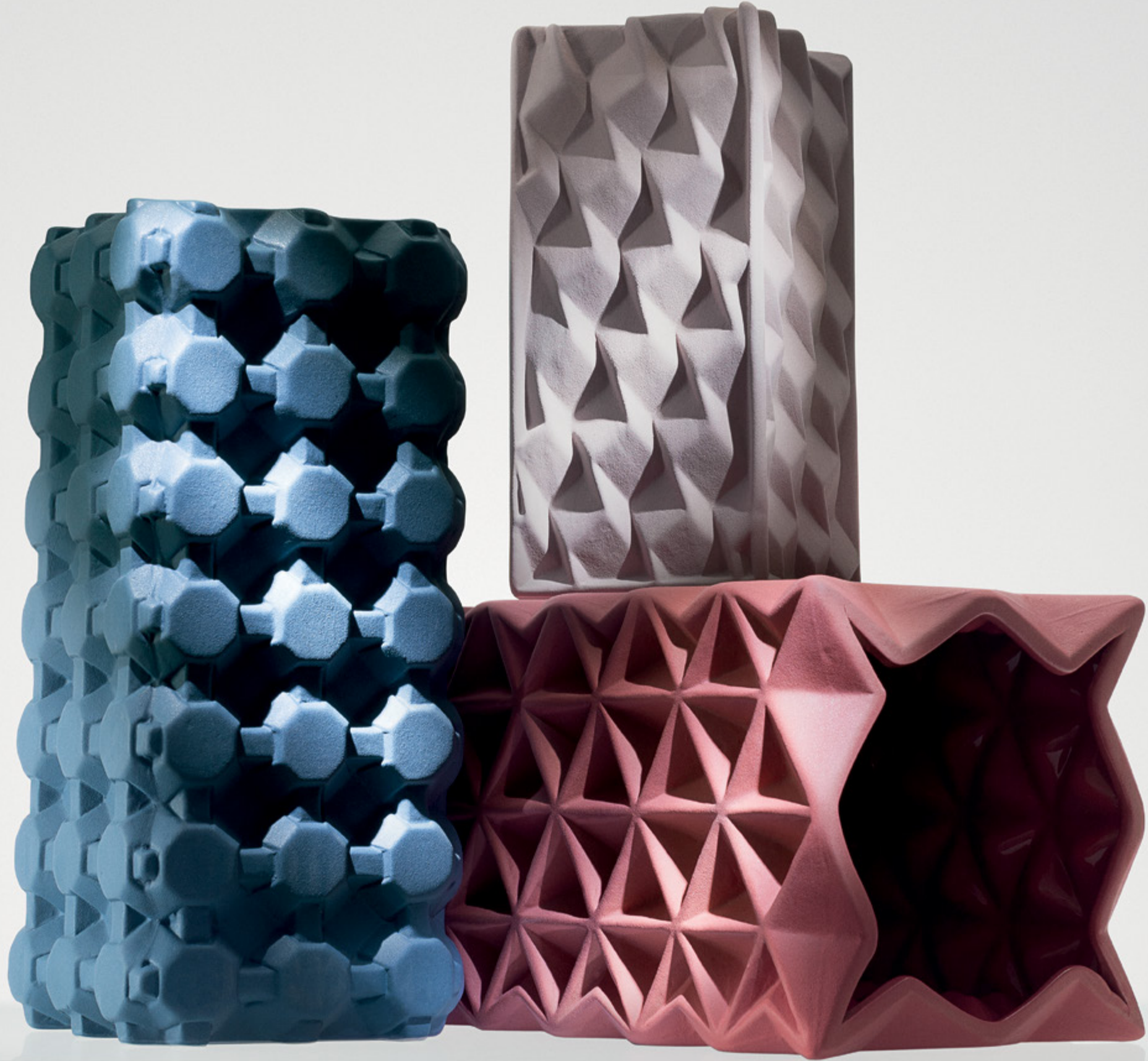
ECLECTIC
BY
TOM
DIXON

FRANFURTER **A** STENCIL SERIF **A**

Block WATCH



Grid
VASE



**Fossil
BOOKENDS**





Scent
CANDLES



Stone
CANDLE HOLDER



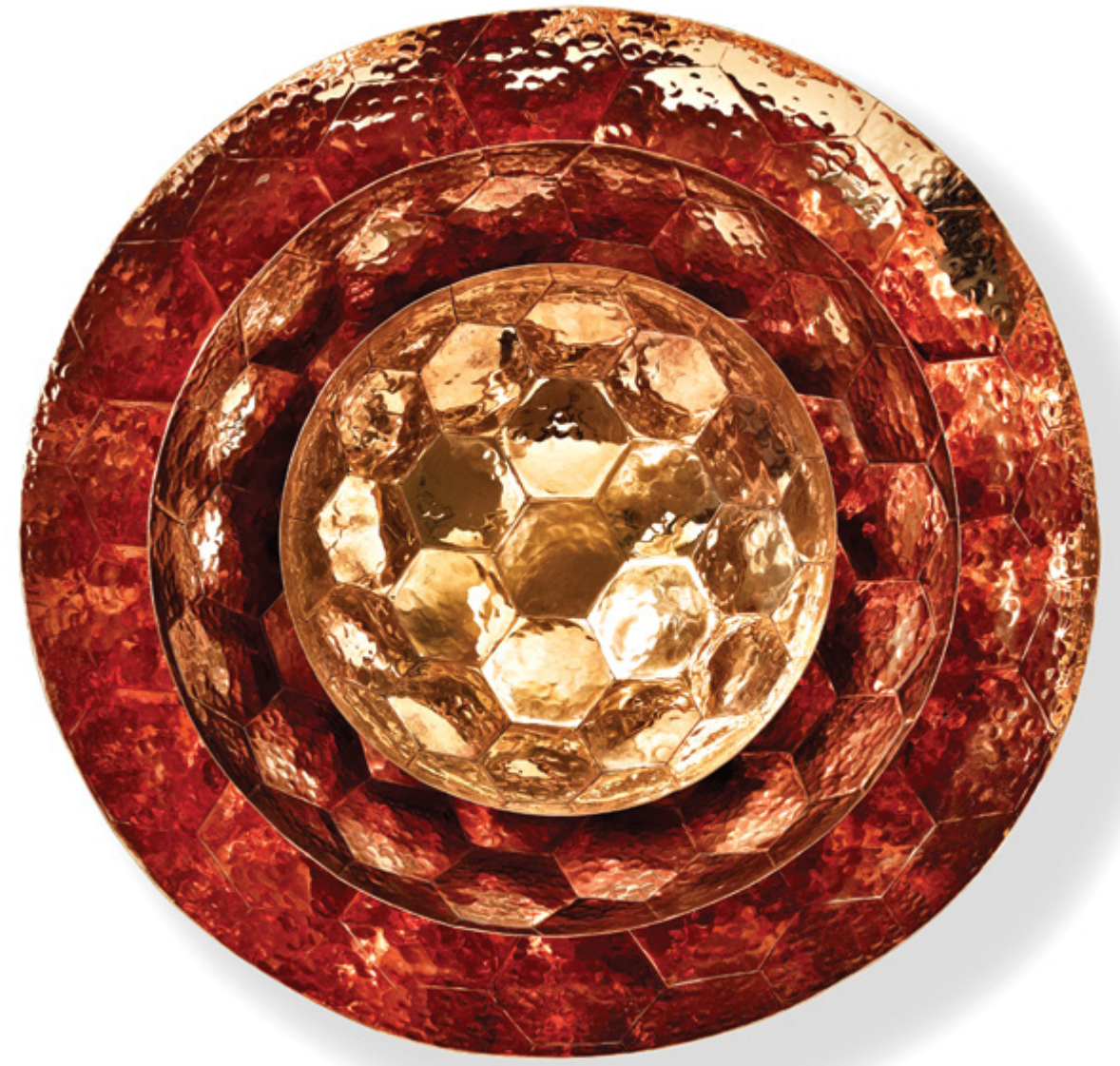
**Chop
RECTANGLE
LONG
PADDLE**



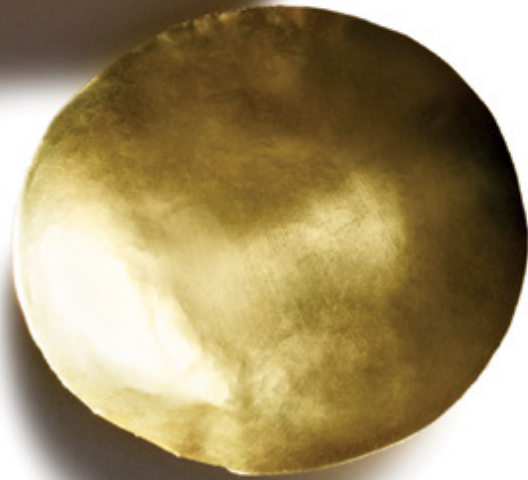
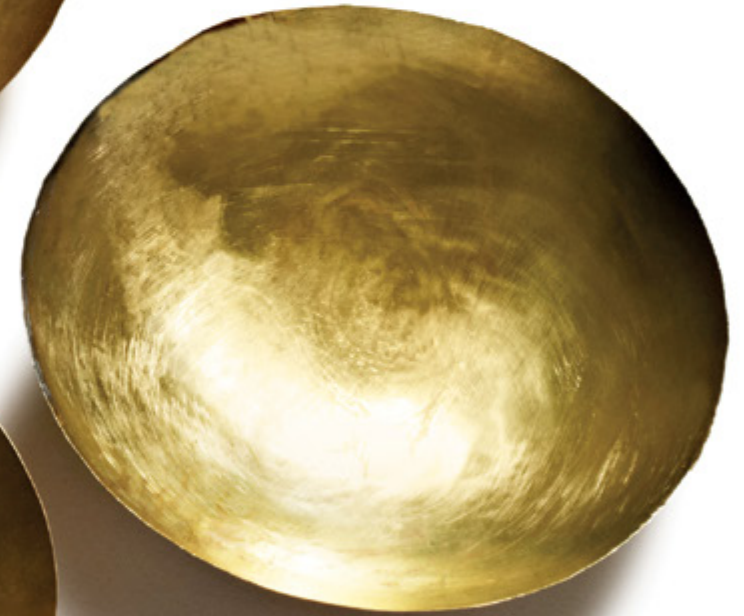
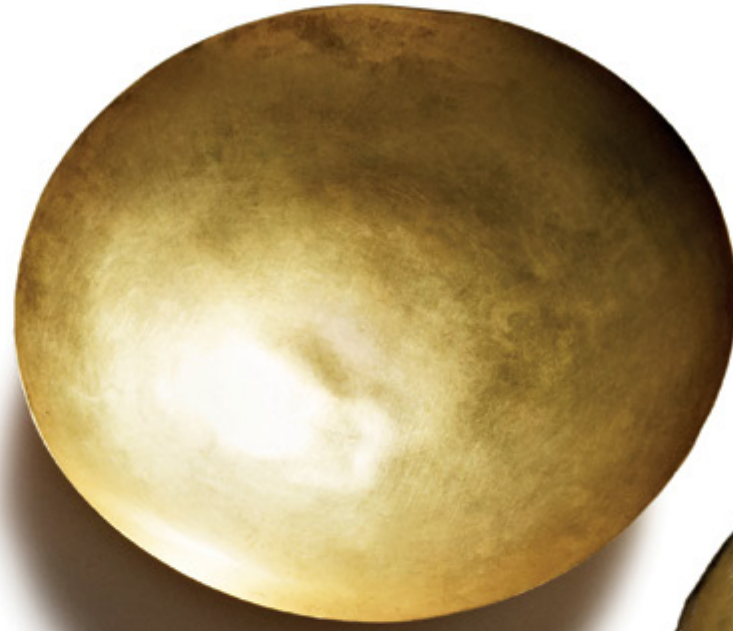
**Bash
VESSELS**



**Hex
BOWLS**



Form
BOWL SET



Hex
CHAMPAGNE BUCKET



Cast
SHOE



Cast
MINI JACK



Cast
NUTCRACKER



Cast
FACTORY



Form

Form BOWL TALL   New!

Black & Copper

A series of handmade dishes beaten, bashed and hammered into shape from fine sheets of copper. Finished with a matt black exterior

Small (set of 2) H60 x Ø92mm

Large (set of 5) H80 x Ø280mm

Form BOWL DEEP   New!

Black & Brass

A series of handmade dishes beaten, bashed and hammered into shape from fine sheets of brass. Finished with a matt black exterior

Small (set of 3) H80 x Ø195mm

Large (set of 2) H115 x Ø330mm

Form BOWL SET 

A nest of five delicate dishes formed from fine sheets of brass and finished with a warm gold wash

Small Set H30 x Ø150mm

Large Set H45 x Ø270mm

Form CAKE SLICE 

A solid brass cake trowel made modern with a neat square handle
H35 x W325 x D70mm

Form TRAY SQUARE 

A tray stamped from a solid sheet of brass. The sophisticated way to serve British afternoon tea

H27 x W490 x D440mm

Form TEAPOT 

A round teapot made from spun brass, polished and then dipped in a warm gold wash

H135 x W250 x D145mm

Form CADDY 

A cylindrical tea caddy made from spun brass, polished and then dipped in a warm gold wash

H125 x W85 x D85mm



Form JUG

A vessel made from spun brass, polished and then dipped in a warm gold wash
H255 x W145 x D88mm

Form SUGAR DISH & SPOON

Made from spun brass, polished and then dipped in a warm gold wash
H60 x W110 x D110mm

Form MILK JUG

A simple jug made from spun brass, polished and then dipped in a warm gold wash
H90 x W75 x D75mm

Cast



Gem CANDLEABRA New!

A gold finished aluminium candelabra with an extreme silhouette. Inspired by the facets of cut gemstones
H340 x W250 x D100mm

Gem TEA LIGHT HOLDER New!

A gold finished aluminium tea light holder which takes inspiration from the facets of cut gemstones
H40 X Ø90mm



Gem CANDLE STICK New!

A gold finished aluminium candlestick with an angular silhouette. Inspired by the facets of cut gemstones
H225 X Ø145mm



Gem VASE TALL New!

A gold finished aluminium vase with an angular silhouette. Inspired by the facets of cut gemstones
H220 X Ø75mm



Gem VASE LARGE New!

A gold finished aluminium vase with an angular silhouette. Inspired by the facets of cut gemstones
H180 X Ø155mm

Leather

Hide WALLETS   New!

A series of wallets for cards and change. Made in vegetable tanned Italian leather with copper plated hardware detailing and stamped with our logo. Made in London

Small H15 x W100 x D80mm

Large H20 x W180 x D150mm

Hide TABLET CASE  New!

A tablet case and notebook holder made from vegetable tanned Italian leather. Featuring copper plated hardware detailing and stamped with our logo. Made in London

H30 x W270 x D210mm

Hide LUGGAGE TAG  New!

A traditional luggage tag stamped with a contemporary update. Made from vegetable tanned Italian leather each piece is debossed with a statement graphic. Made in London

H15 x W70 x D170mm

Hide KEY TAG  New!

A simple key tag stamped with a contemporary update. Made from vegetable tanned Italian leather each piece is debossed with a statement graphic. Made in London

H5 x W55 x D115mm

Etch

Etch THE CLIPPER  New!

A tea strainer formed from digitally etched stainless steel. Tea leaves are infused within a cone shaped body hung on a delicate metal string with a neat circular tab

H50 x Ø58mm

Mug

Mug BONE CHINA 

A pure white fine bone china mug with a glazed finish. Each mug features a graphic cast into the exterior including a lion, a rhino, a truck and a pistol.

Manufactured in the UK through one of Britain's oldest ceramic factories.

H95 x W115 x D85mm

Tool

Tool THE BOOKWORM



An essential for any bookworm – a solid brass bookmark formed from etched sheet brass. Available in curious shapes including a quill, a fountain pen, a magnifying glass and a finger pointer. Intricate design detail and our logo are digitally etched on every piece.

H0.1 x W5.8 x D14mm

Tool THE GOLDEN RULE



The ultimate desk tool. A solid brass ruler with durable etched markings and our heritage logo

H1 x W335 x D32mm

Tool THE CLIP



A set of six paperclips etched from a sheet of brass embossed with our heritage logo

H1 x W40 x D40mm (Each)

Tool THE COPYCAT

A brass sheet etched with three phrases in three different typefaces

H1 x W185 x D260mm

Tool THE MATHEMATICIAN



A kit of parts for the mathematics aficionado and precision draughtsman. All precisely etched in brass
H6 x W222 x D308mm (Set)

1 2 3 4 5
6 7 8 9 10 11
12 13 14 15 16 17
18 19 20 21 22 23
24 25 26 27 28 29
30 31

Tool THE PERPETUAL CALENDER

A stainless steel calendar with three mobile magnetic graphic cursors for the modern diarist. Each calendar is etched with numbers and letters to represent every date in the year. Stand your calendar proud on your desk or hang on a wall and never miss a date again.

H0.1 x W21 x D29.7mm

Block



Block WATCH

A series of three watches made from brass, stainless steel and rose gold with a deep etched dial, a crystal face and Swiss movement. Each watch is laser etched with its own unique number. Available in brass with a leather strap, stainless steel with a mesh strap and rose gold with a mesh strap
H40 x W40 x D6mm (Face only)

Bone

Bone BOWL Large Brass  **New!**
A sculptural bowl for the table top cast in solid brass with a matt finish and shaped into a curved lattice form
H130 x Ø390mm

Bone TRIVET Brass  **New!**
A sculptural stand for hot pans and plates cast in solid brass and shaped into an intricate lattice form
H60 x W310 x D280mm

Bone NAPKIN RING SET Brass  **New!**
A set of four sculptural napkin rings cast in solid brass with a matt finish
H5 x W280 x D310mm

Cell


Cell TEA LIGHT HOLDER 
A photo etched tea-light holder.
Available in brass and stainless steel
H70 x W120 x D115mm

Spun

Spun VASE TRIO 
A trio of copper vases
H295 x W270 x D270mm

Spun VASE TALL 
An elegantly tall copper vase to be used as an extravagant flower vase or contemporary sculpture
H290 x W90 x D90mm

Grid

Grid VASE 
A quadrangle ceramic vase with a moulded geometric pattern, finished with a tactile glaze
Small Mushroom H215 x W100 x D100mm
Medium Teal H295 x W130 x D130mm
Tall Rose Pink H340 x W160 x D160mm

Chop

Chop RECTANGLE

A rectangular chopping board milled from solid oak with a soft curved edge detail

H25 × W600 × D400mm

Chop LONG

A long chopping board milled from solid oak with a soft curved edge detail

H25 × W750 × D200mm

Chop PADDLE

A paddle chopping board milled from solid oak with a soft curved edge detail

H25 × W600 × D400mm

Bash

Bash VESSELS

A brass vessel shaped by hand into an expressive crumpled form and finished with a gold wash

Small H160 × W310 × D200mm

Large H230 × W450 × D300mm

Hex

Hex BOWLS

A multi-functional dish hand-formed in solid copper with a hammered hexagonal pattern

Small H65 × Ø180mm

Medium H90 × Ø285mm

Large H100 × Ø380mm

Hex CHAMPAGNE BUCKET

A solid copper champagne bucket with a hammered hexagonal pattern

H230 × Ø200mm

Scent

Scented CANDLES

A series of scented candles contained within a hand-spun vessel formed in brass, copper or nickel, with a solid Morwad marble lid

Medium H85 × W85 × D84mm

Large H105 × W110 × D110mm

Scented CANDLES GIFT SET 
A trio of mini scented candles encased within hand-spun vessels formed of brass, copper and nickel
H58 x W65 x D65mm (Each)

Scented TEA LIGHTS  **New!**
A series of twelve scented tea lights formed in black wax.
H20 x Ø4mm


Candle


PILLAR CANDLE  **New!**
A handmade pillar candle formed in statement black wax and stamped with our logo
H265 x W180 x D178mm

TAPER CANDLE SET  **New!**
Five handmade tapered candles formed in statement black wax
H200 x W270 x D300mm (Each)

Cast

Cast SHOE 
The classic English Gentleman's brogue cast in solid aluminium with a copper plated finish or a black powder coating.
H85 x W300 x D100mm

Cast MINI JACK 
A stacking doorstop and paperweight version of the ubiquitous Jack Light. Available in a copper plated finish or in cast iron with a black powder coating
H120 x W120 x D120mm

Cast NUTCRACKER 
A durable cast iron nutcracker designed to fit in the palm of your hand
H150 x W100 x D45mm

Cast FACTORY 
A money box for industrious savers, modelled on a British factory from the Industrial Revolution era
H155 x W215 x D64mm

**Copyright © 2013 Design Research Ltd
Published by Design Research Ltd**

**Some of these products are handmade
and variations may occur from piece
to piece.**

**All rights reserved. No part of this
publication may be reproduced or
transmitted in any form or by any
means, electronic or mechanical,
including photography, recording or
any information storage and retrieval
system without permission in writing
from the publisher.**

**Identity & Packaging by Made Thought
Photography by Peer Lindgreen
and Tom Mannion**

tomdixon.net